

(800) 562-0900

(800) 562-0900

# MACHINE TOOL & WORKHOLDING ACCESSORIES



INFO@SWIFTTOOL.COM

WWW.SWIFTTOOL.COM





## Drawbars for Milling Machines

**USA** **MADE**

### Made in USA Drawbars

Manufactured from low carbon steel, soft and black oxide plated.  
Drawbars are manufactured from two parts—the shaft and the hex.

Drawbars for Milling Machines						
Fits Milling Machine	Overall Length	Hex Length	Shaft Length	Thread & Length	Spacer Length	Order Number
<b>Bridgeport &amp; Copies</b>						
2J Vari Speed Head	22-3/4"	4-1/4"	18-1/2"	7/16-20 X 1-3/4"	1/4"	<b>Z9005</b>
1J Step Pulley Head	20-1/4	1-3/4	18-1/2	7/16-20 X 1-1/2	1/4	<b>Z9004</b>
<b>Lagun</b>						
Vari Speed Head	25-3/4	7-1/8	18-5/8	7/16-20 X 1-1/2	none	<b>Z9005LAGR</b>
<b>Wells Index</b>						
Vari Speed Head	24-1/2	5-1/4	19-1/4	7/16-20 X 2	none	<b>Z9005WEL</b>
<b>Kondia</b>						
Vari Speed Head	23-1/4	4-1/4	19	7/16-20 X 1	1/4	<b>Z9005KON</b>
<b>Excello</b>						
Vari Speed Head	23	3-1/2	19-1/2	7/16-20 X 1	1/4	<b>Z9005EXC</b>

**USA** **MADE**

### The Universal Drawbar **USA** **MADE**

Our Universal Draw Bar was developed by our engineering staff in response to requests from many customers who were unable to find Drawbars to fit their machines. Both the Hex or wrench end, and the threaded end were designed with enough adjustments to fit almost any machine in use today!

**Order Number**
**Z9005UNIV**

The Universal Drawbar is provided with a variety of spacers which allows the user to adjust the shaft length (measured from under the spacer to the end of the threaded shaft) from a maximum length of 20", down to 17-1/4". Sufficient spacers are included to allow shaft length adjustments by one quarter inch increments.

The 7/16-20 thread on the shaft is a full 1-1/2" long, and can be used with any R-8 collet.  
The Hex head measures 7-1/4" long, which will accommodate a wide range of milling machines.

All the above attributes give a wide range of flexibility and allow this drawbar to be fitted onto a wide variety of milling machines.

The overall length of the drawbar is 27-1/2".  
Material is low carbon steel, unhardened, with black oxide finish.

### Drawbars for Milling Machines w/Right Angle Attachments

Drawbars for Milling Machines w/Right Angle Attachments						
Fits Milling Machine	Overall Length	Hex Length	Shaft Length	Thread	Spacer Length	Order Number
Bridgeport & Kondia	26-1/4"	7-3/4"	18-1/2"	7/16-20	1/4"	<b>Z9005R1</b>
Index & Lagun	29	10-3/4	18-1/4	7/16-20	1/4	<b>Z9005R2</b>
Alliant & Sharp	27-1/4	9	18-1/4	7/16-20	1/4	<b>Z9005R3</b>

**USA** **MADE**

**SPECIAL ORDERS  
AVAILABLE—  
Small Quantities  
to Large Volume**





# Quill Feed Handles & Spider Handles

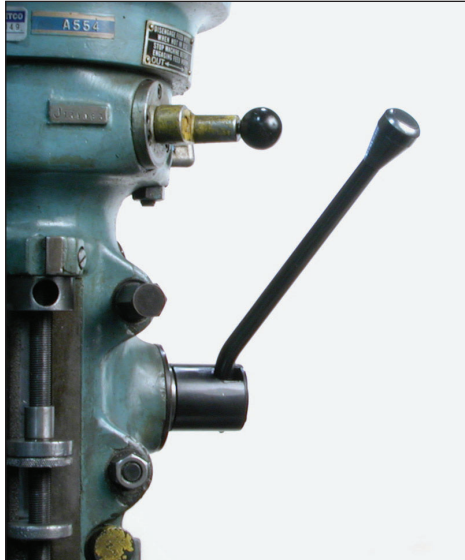
**USA** **MADE**

## Quill Feed Handles

### for all Bridgeport-type Milling Machines

Manufactured to fit the Bridgeport-type Series 1 & 2 Milling Machines. Speeds up all quill operations.

A flick of the wrist retracts the pin from the quill feed index plate, allowing you to move the handle to any desired position. Eliminates the slow process of pulling off the standard quill feed handle, and resetting it for different positions.



- 1" hole diameter. 3/16" diameter pin.
- All steel construction with heavy duty spring action.
- All parts Zinc plated for protection and appearance.
- Made In USA

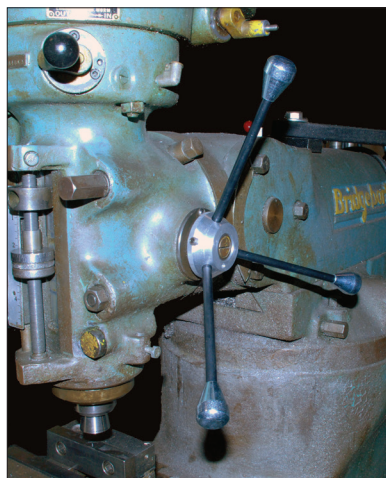
Quill Feed Handles	
Style	Order Number
for Bridgeport Mills	<b>Z9900</b>
For Bridgeport (Zinc Plated)	<b>Z9900-ZINC</b>
for Lagun Mills	<b>Z9900-LAG</b>

Discontinued


**USA** **MADE**

## Spider Handle

A quality USA made spider handle that replaces the standard quill feed handle on most milling machines. Perfect for all drilling operations.



Sturdy construction features a solid aluminum machined center (not a casting), with a 1" bore and a 3" diameter. (3) heavy duty solid steel spokes and knobs extend approx. 6-1/2" from center. Plated finish. Made in USA.

Order Number
<b>Z9910</b>

**USA** **MADE**


Accurate  
Manufactured  
Products  
Group

Phone: 317-472-9000 • FAX: 317-472-9010 • email: [sales@ampg.com](mailto:sales@ampg.com) • [www.ampg.com](http://www.ampg.com)

[INFO@SWIFTTOOL.COM](mailto:INFO@SWIFTTOOL.COM)
[WWW.SWIFTTOOL.COM](http://WWW.SWIFTTOOL.COM)



## Milling Machine Accessories

**USA** **MADE**

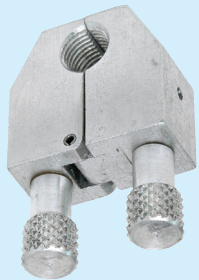
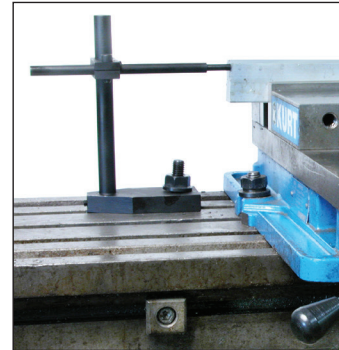

### Precision Adjustable Mill Stop

**A rigid stop for milling set ups. Mounts to the table.**

This time saving and handy accessory was designed for use on Milling Machines, Jig Borers, and for horizontal and vertical milling set ups.

Use with Angle Plates, Vises, Jigs, etc.  
to serve as a rigid stop.  
Made in USA.

- 1/2" hole for T Slot mounting
- 3/8" Diameter Rod x 7" Long
- Base 2" x 4-1/2"
- Overall height: 7"
- Steel, Black Oxide Plated
- Weight— 3lbs.

**Order Number**
**Z9019**
**USA** **MADE**


### Quill Stop

**For All Milling Machines—Quickly Sets Quill Depth**

To insure a perfectly aligned Quill Stop, we assemble each stop, then face it off, drill and tap it. This process is expensive but it guarantees you the finest Quill Stop. Made in the USA at a most affordable price!

- Quick Action Clipping
- Rapid Depth Setting
- Easily and Quickly Removeable
- Extra Strong Spring
- Easily Positioned
- Sturdy Aluminum Knobs
- Positive Locking Action
- Unconditionally Guaranteed
- Made in USA

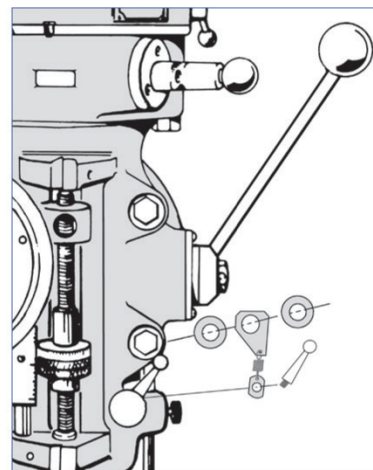
#### Quill Stop

Description	Order Number
1/2 - 20 threads for Mills	<b>Z9006</b>
1/4 - 20 threads for drill presses	<b>Z9006A</b>
3/8 - 24 threads for drill presses	<b>Z9006B</b>

**USA** **MADE**


### Quill Free

Stops the Quill Lock handle from falling and putting drag on the Quill. Provides positive lock engagement and eliminates all drag. Made in USA

**Order Number**
**Z8700**
**USA** **MADE**


**SPECIAL ORDERS  
AVAILABLE—**

**Small Quantities  
to Large Volume**







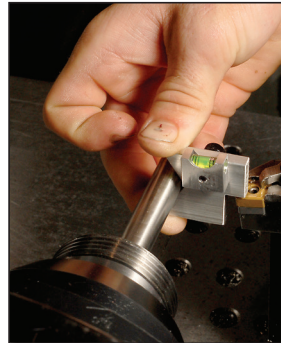
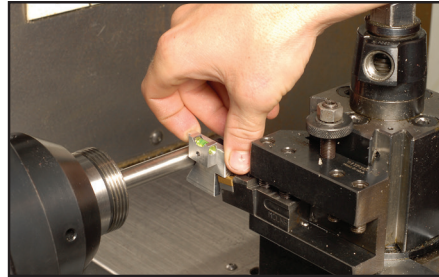
## Milling Machine Accessories

**USA** **MADE**

### Machine Set-Up Gage with Level

- Aluminum Body
- Made In USA

Order Number
Z8995

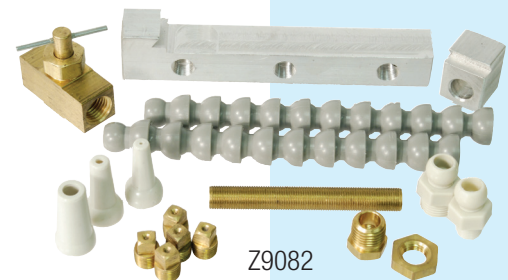
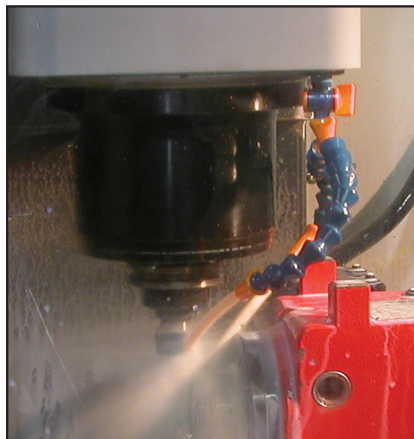
**USA** **MADE**


### Directional Lube—Fluids Dispenser for Machines

Keeps table free, by mounting under the head of your Mill.  
Mounts with one screw. Works with all coolant systems.  
Valve regulates coolant flow, and the Lube can be mounted for right or left hand supply.

- Comes complete with Valve, flexible hose and nozzle, and pipe plugs.
- All parts corrosion resistant.
- Made In USA.

Directional Lube	
Description	Order Number
Fits Mills	Z9080
Universal	Z9082

**USA** **MADE**


Z9082



Z9080



Accurate  
Manufactured  
Products  
Group

Phone: 317-472-9000 • FAX: 317-472-9010 • email: [sales@ampg.com](mailto:sales@ampg.com) • [www.ampg.com](http://www.ampg.com)

[INFO@SWIFTTOOL.COM](mailto:INFO@SWIFTTOOL.COM)
[WWW.SWIFTTOOL.COM](http://WWW.SWIFTTOOL.COM)

G5



## Milling Machine Accessories

### Shell End Mill Arbor Screws

Fits Style "C" and other styles of Shell End Mill Arbor

- Material: Cold Rolled Steel
- Heat Treat: Carburized to Rc C45-50
- Finish: Black Oxide and Oil



Shell End Mill Arbor Screws				
Thread	Head Diameter	Head Height	Thread Length	Order Number
1/4-28	5/8"	17/64	1/2"	<b>Z1500</b>
3/8-24	7/8"	19/64	5/8	<b>Z1501</b>
1/2-20	1-3/16"	5/16	13/16	<b>Z1502</b>
5/8-18	1-1/2"	5/16	61/64	<b>Z1503</b>
3/4-16	1-7/8"	23/64	1-1/8	<b>Z1504</b>
1-14	2-1/2"	7/16	1-1/4	<b>Z1505</b>

**USA** **MADE**

### Milling Machine Arbor Spacers

Imported — Manufactured of Hardened Steel  
Ground for parallel and perpendicular surfaces,  
to insure that Milling Cutters mounted on a Milling Arbor operate correctly.

Milling Machine Arbor Spacers				
Thickness	ID	OD	Keyway	Order Number
1/4"	1"	1-1/2"	1/4"	<b>ARB112</b>
1/4	1-1/4	1-3/4	5/16	<b>ARB113</b>
1/4	1-1/2	2-1/8	3/8	<b>ARB114</b>
1/4	2	2-3/4	1/2	<b>ARB115</b>
3/8"	1	1-1/2	1/4	<b>ARB212</b>
3/8	1-1/4	1-3/4	5/16	<b>ARB213</b>
3/8	1-1/2	2-1/8	3/8	<b>ARB214</b>
3/8	2	2-3/4	1/2	<b>ARB215</b>
1/2"	1	1-1/2	1/4	<b>ARB312</b>
1/2	1-1/4	1-3/4	5/16	<b>ARB313</b>
1/2	1-1/2	2-1/8	3/8	<b>ARB314</b>
1/2	2	2-3/4	1/2	<b>ARB315</b>
3/4"	1	1-1/2	1/4	<b>ARB412</b>
3/4	1-1/4	1-3/4	5/16	<b>ARB413</b>
3/4	1-1/2	2-1/8	3/8	<b>ARB414</b>
3/4	2	2-3/4	1/2	<b>ARB415</b>
1"	1	1-1/2	1/4	<b>ARB512</b>
1	1-1/4	1-3/4	5/16	<b>ARB513</b>
1	1-1/2	2-1/8	3/8	<b>ARB514</b>
1	2	2-3/4	1/2	<b>ARB515</b>

**IMPORT**

**SPECIAL ORDERS  
AVAILABLE—**  
**Small Quantities  
to Large Volume**







## 5C Fixture Mounts & Precision Chucks

### 5C Fixture Mounts

A lathe tool for use in place of face plate fixturing.

Has a 5C back for quick mounting, and a soft face for ease of machining to your workpiece.

- Low carbon steel
- Made In USA

Used on Lathes with 5C spindles — for turning or boring odd shaped parts that cannot go into a collet. Useful for turning any off-center holes, or odd shapes. Machinable soft face allows you to mill the fixture mount to accept the work piece, then drill and tap holes to clamp the part onto the fixture mount.

Boring off-center holes is the perfect application. Mount the work piece with clamps to the fixture mount off-center, to perform the required bore, which would line up to the lathe center point.

Excellent for working on castings. Mounts and dismounts very quickly — takes the same amount of time as mounting a 5C collet. You can design the clamping system to hold your part, so that by loosening a few screws, you can mount and dismount your parts for production.

The longer lengths are used for long parts. Boring into the fixture mount allows you to nest the long part inside, increasing the rigidity of the part being machined.

The longer heads can be faced off after one part is done, presenting a fresh face for reuse!

Also can be used on Mills— 5C Collet fixtures can use this for fixturing parts for measuring, or any secondary operations on the Mills.

5C Fixture Mounts			
Face Diameter	Face Length	Overall Length	Order Number
2"	1"	4-1/2"	<b>Z9560</b>
2	3	6-1/2	<b>Z9561</b>
3	1	4-1/2	<b>Z9564</b>
3	3	6-1/2	<b>Z9565</b>
4	1	4-1/2	<b>Z9569</b>
4	3	6-1/2	<b>Z9570</b>
5	1	4-1/2	<b>Z9575</b>
6	1	4-1/2	<b>Z9580</b>



**Special and Custom sizes can be manufactured to your specs. Call for price & delivery.**

Discontinued

**USA**  **MADE**

### 5C Mount Precision Chucks

#### A handy accessory for Lathe Collets

Eliminates tearing down a collet set up on a lathe when working with material diameters that you don't have the correct size collets for.

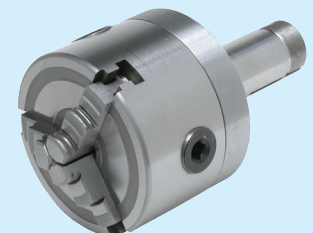
We manufacture the adaptor back in the USA, and assemble it onto an imported Chuck.

#### Our 5C precision chucks work with any 5C tooling!

To mount your own 3" or 4" Chucks, see our Fixture Mounts.

5C Mount Precision Chucks							
Chuck Diameter	O.D. Clamping Range	I. D. Holding Range	Hole Size 5C Back	Hole Size thru chuck	T. I. R. Repeatability	Weight	Order Number
3" 3-Jaw, Self-Centering (Extra Chuck Jaws & Chuck Key included)	5/64—2-15/32	63/64—2-3/4	3/4	5/8	.003	5 Lbs	<b>Z9550</b>
3" 4-Jaw, Independent (Chuck Key included)	5/8—2-1/2	45/64—2-1/2	3/4	57/64	.003	5 Lbs	<b>Z9551</b>
4" 3-Jaw, Self-Centering (Chuck Jaws & Chuck Key included)	5/64—3-5/32	1-3/16—3-35/64	3/4	7/8	.003	9 Lbs	<b>Z9552</b>

Attachment Back Made in USA—Imported Chuck





## 5C Adapter Body, Collet Heads & Pads

**USA** **MADE**

### 5C Adapter Body

Used to customize for your exact workpiece. Works anywhere a 5C Collet can be used.

Insert the Expander Pin, bore, mill, or step out to size, remove the pin, and go!

5C Adapter body takes steel or aluminum heads.

**Made in USA.**

**Order Number**
**Z1140**
**USA** **MADE**

### Soft Collet Heads

Each Soft Collet Head comes with one expander pin and fits the **Z1140** 5 C Adapter Body shown above.

**USA** **MADE**


Photo of 5C Adapter Body and Steel Soft Collet Head. 5 C Adapter Body fits all the Heads shown below.

#### Soft Collet Heads

Head Diameter	Head Thickness	Material	Order Number
1-1/2"	7/8"	Steel	<b>Z1153</b>
2	3/4	Steel	<b>Z1145</b>
2	1-1/4	Steel	<b>Z1154</b>
2-1/2	1	Steel	<b>Z1146</b>
2-1/2	1-1/2	Steel	<b>Z1155</b>
3	1	Steel	<b>Z1147</b>
3	1-5/8	Steel	<b>Z1156</b>
4	1	Steel	<b>Z1148</b>
1-1/2	7/8	Aluminum	<b>Z1157</b>
2	3/4	Aluminum	<b>Z1149</b>
2	1-1/4	Aluminum	<b>Z1158</b>
2-1/2	1	Aluminum	<b>Z1150</b>
2-1/2	1-1/2	Aluminum	<b>Z1159</b>
3	1	Aluminum	<b>Z1151</b>
3	1-5/8	Aluminum	<b>Z1160</b>
4	1	Aluminum	<b>Z1152</b>

### Internal Expanding Collet Heads

Soft Steel with Expansion Screw

**USA** **MADE**

#### Internal Expanding Collet Heads

Collet Diameter Range	Collet Length	Order Number
5/16 to 9/16	5/8"	<b>Z1105</b>
1/2" to 1"	1"	<b>Z1106</b>
1/2" to 1"	1-3/4"	<b>Z1107</b>
1/2" to 1-1/2"	1"	<b>Z1108</b>
1/2" to 1-1/2"	1-3/4"	<b>Z1109</b>
1/2" to 2"	1"	<b>Z1110</b>
1/2" to 2"	1-3/4"	<b>Z1111</b>
1/2" to 2-1/2"	1"	<b>Z1112</b>
1/2" to 2-1/2"	1-3/4"	<b>Z1113</b>
1/2" to 2-15/16"	1"	<b>Z1114</b>
1/2" to 3-15/16"	1"	<b>Z1115</b>
1/2" to 4-15/16"	1"	<b>Z1116</b>

### Collet Pads

#### Collet Pads

Collet Pad Diameter	Collet Length	Material	Order Number
3-1/2"	1"	Steel	<b>Z1130</b>
3-1/2"	1"	Aluminum	<b>Z1131</b>
4-1/2"	1"	Steel	<b>Z1132</b>
4-1/2"	1"	Aluminum	<b>Z1133</b>

**USA** **MADE**

**SPECIAL ORDERS  
AVAILABLE—  
Small Quantities  
to Large Volume**







## 5C Collet Bodies & Collet Stops

**USA** **MADE**

### 5C Expanding Collet Body

Precision made in the USA for custom set ups.  
5C Adapter Body can be used anywhere a 5C Collet goes, and the individual expanding collet attachments can be modified for your particular job.

**Order Number**
**Z1100**
**USA** **MADE**


### 5C Step Collet Body

**Order Number**
**Z1125**
**USA** **MADE**


### Adjustable Collet Stop

Adjustable Stop has fine threaded stud for incremental positioning. Screwdriver slot in stud allows quick and accurate setting.

- Steel with Black Oxide plating.
- Stud is 4" long.
- Made in USA

**Order Number**
**Z9002**
**USA** **MADE**


### Adjustable Work Stop for all 5C Chucks

A handy positive work stop for repetitive operations. Steel center attaches to the internal thread of the 5C back. 8" long stud allows for a wide range of adjustment. Made in USA.

- Low carbon steel, black oxide plated.
- Stud is 7/16" diameter for rigidity, with a screwdriver slot in the end.
- Body has a 7/8-20 thread to fit our 5C Backs.
- PLEASE NOTE: this stop will not fit standard 5C Collets.

**Order Number**
**Z9553**
**USA** **MADE**


### Universal 5C Collet Stop

5 piece Set converts standard 1" Lathe Collets into solid or ejector stop collets. Comes complete with all attachments and springs.

- Made from steel with black oxide plating.
- Made in USA

**Order Number**
**Z9003**
**USA** **MADE**


### 5C Extra Length Collet Stop

#### For all 5C collets

For chucking parts to a depth of 7-1/2" from collet face.

- Steel with black oxide plating.
- Stop stud is 7/16" diameter.
- Made in USA

**Order Number**
**Z8997**
**USA** **MADE**

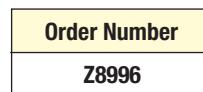

### 5C "Finger" Collet Stop

#### 5 piece Set is versatile and quick adjusting

**USA** **MADE**

Complete Set Includes:

- (1) Stop body
- (1) Extra 1/8" Dia. End Rod
- (1) Extra 1/2" Dia. End Rod
- (1) Extra 3/4" Dia. End Rod
- (1) Extra 1" Dia. End Rod

**Order Number**
**Z8996**


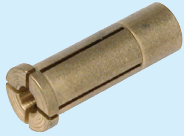
Accurate  
Manufactured  
Products  
Group

Phone: 317-472-9000 • FAX: 317-472-9010 • email: sales@ampg.com • www.ampg.com

G9



# Grinder Bushings & Slitting Saw Arbors **USA MADE**



## Reducer Bushing for Air Die Grinders

### 1/4" to 1/8" Reducer Bushing

A quick change solution that allows the use of any tool with a 1/8" shank tool in a 1/4" Collet. Precision **USA made** split brass bushing grips tightly. Saves time and money!

**Order Number**
**Z2100**
**USA MADE**

## Slitting Saw Arbors

Long, Precision Ground, extra rigid Arbors are manufactured by Accurate here in the USA. Steel, case hardened, and Black Oxide plated. We grind the shanks after machining and heat treating for best results.

- 6 sizes with ground Weldon Flat shanks
- Bodies are ground to match the caps:

**USA MADE**

Tolerances:

- +/- .003 concentricity from shank to mating bore of cap.
- +/- .001 square from shank to clamping surface of cap.

### Slitting Saw Arbors

Fits Saw ID "A"	OD "B"	Cap Height "C"	Body Length "D"	Shank Length "E"	Shank Diameter "F"	Order Number
3/8	5/8"	.080	1-3/16"	1.700	1/2"	<b>Z1305</b>
1/2	3/4"	.095	1-3/8"	1.700	1/2"	<b>Z1310</b>
5/8	1"	.122	1-1/2"	2.030	3/4"	<b>Z1315</b>

**LIMITED  
SUPPLY  
ITEMS**


Saw Blade not included

## 3 Pc. Slitting Saw Arbor Sets

**USA MADE**

### 3 Piece Set

Fits Saws:  
5/8", 1", 1-1/4"

**Order Number  
Z1335**


## Multi Saw Arbor

This Multi Saw Arbor with a telescopic centering assembly is made to accommodate any saw or cutter with one of five standard hole sizes: 1/2", 5/8", 3/4", 7/8", and 1". Works with thicknesses up to 3/16" and diameters to 4". Comes in plastic holding tube, allen wrench included.

**Order Number**
**Z1180**
**USA MADE**


**SPECIAL ORDERS  
AVAILABLE—  
Small Quantities  
to Large Volume**



Saw Blade not included







## Expanding Arbors

**USA**  **MADE**

### 8 Piece Expanding Arbor Set

Chuck the Expanding Arbor in your Machine Tool, tighten the expansion screw, and the Arbor expands by up to 0.002".

Machine the Arbor to your correct part holding dimensions. Back off the Expansion screw reducing the Arbor diameter, position your part on the Arbor, and retighten.

8 Piece Set Includes:

- (1) 1/4" Arbor (Z9110)
  - (1) 3/8" Arbor (Z9111)
  - (1) 1/2" Arbor (Z9112)
  - (1) 5/8" Arbor (Z9113)
  - (1) 3/4" Arbor (Z9114)
  - (1) 7/8" Arbor (Z9115)
  - (1) 1" Arbor (Z9116)
  - (1) 1-1/4" Arbor (Z9117)
- in wooden stand

Set Order Number
<b>Z9125</b>

**USA**  **MADE**


Arbors are Low Carbon Steel, soft for easy machining.

### 3 Piece Expanding Arbor Set

Low Carbon Steel, Black Oxide plated.  
Made In USA

3 Piece Set Includes:

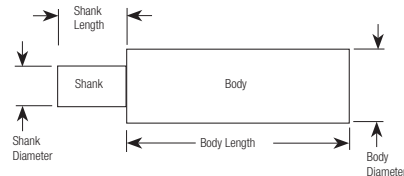
- (1) 1-1/2" Arbor (Z9118)
  - (1) 1-3/4" Arbor (Z9119)
  - (1) 2" Arbor (Z9120)
- in wooden stand

Set Order Number
<b>Z9121</b>

**USA**  **MADE**


### Individual Expanding Arbors

Low Carbon Steel, Black Oxide plated.  
Made In USA



Individual Arbors					
Body Diameter	Body Length	Shank Diameter	Shank Length	Replacement Screw	Order Number
1/4"	4"	none	none	Z9110-2	<b>Z9110</b>
3/8"	4"	none	none	Z9111-2	<b>Z9111</b>
1/2"	4"	none	none	Z9111-2	<b>Z9112</b>
5/8"	4"	none	none	Z9113-2	<b>Z9113</b>
3/4"	4"	none	none	Z9113-2	<b>Z9114</b>
7/8"	4"	none	none	Z9115-2	<b>Z9115</b>
1"	4"	none	none	Z9115-2	<b>Z9116</b>
1-1/4"	2-1/2"	1"	1-7/16"	Z9115-2	<b>Z9117</b>
1-1/2"	2-1/2"	1"	1-7/16"	Z9118-2	<b>Z9118</b>
1-3/4"	2-1/2"	1"	1-7/16"	Z9118-2	<b>Z9119</b>
2"	2-1/2"	1"	1-7/16"	Z9118-2	<b>Z9120</b>
2-1/2"	2-1/2"	1"	1-7/16"	Z9118-2	<b>Z9122</b>
3"	2-1/2"	1"	1-7/16"	Z9118-2	<b>Z9123</b>

**USA**  **MADE**


Accurate  
Manufactured  
Products  
Group

Phone: 317-472-9000 • FAX: 317-472-9010 • email: [sales@ampg.com](mailto:sales@ampg.com) • [www.ampg.com](http://www.ampg.com)





## Vise Speed Handles, Vise Jaws & Chuck Keys **USA MADE**

### Vise Speed Handles

#### For All Sizes of Milling Machine Vises

Quality made in our shop, we offer this Speed Handle with a choice of Hub Centers. New design nests the steel arms inside the solid aluminum hub for a much stronger unit.

- Hub is machined Aluminum, (not a casting).
- (3) Arms project about 4-1/2" inches from hub, and are cold rolled steel, with a plated finish.
- Hub height is approx. 1-9/16".
- Handle weighs 1.7 Lbs.

**USA MADE**

Vise Speed Handles	
Description	Order Number
9/16" Hex Broach - Fits 4" Vise	<b>Z9022</b>
5/8 Hex Broach - Fits 5 Vise	<b>Z9024</b>
3/4 Hex Broach - Fits 6 Vise	<b>Z9021</b>
7/8 Hex Broach - Fits 8 Vise	<b>Z9025</b>
5/8 Square Broach - Fits Imports	<b>Z9023</b>



### Aluminum Soft Jaws for Vises

Aluminum Vise Jaws create a larger, machinable, and customizable holding jaw on your vise. Create steps, pockets, and custom shapes to hold all types of odd shaped workpieces. May be machined over and over again for use on many jobs. Made in USA.

Aluminum Soft Jaws for Vises					
Fits Vise	Length	Height	Thickness	Bolt Size	Order Number
4"	4"	1-1/2"	3/4"	3/8"	<b>Z1190</b>
5	5	1-1/2	3/4	7/16	<b>Z1191</b>
6	6	2	3/4	1/2	<b>Z1192</b>
6	6	2-1/2	1	1/2	<b>Z1193</b>
6	6	3	1	1/2	<b>Z1194</b>
6	6	3	1-1/2	1/2	<b>Z1195</b>
7	7	2	1-1/4	1/2	<b>Z1196</b>

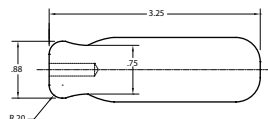
**USA MADE**

### Hand-E-Key Chuck Key

- Handle Material: 6061T6 Aluminum, with Protective Anodized Finish.

#### **PATENTED**

- USA & Worldwide Patents



#### Hand-E-Key Chuck Keys

Chuck Key Size	Order Number
K0	<b>Z0360</b>
K1	<b>Z0361</b>
K2	<b>Z0362</b>
K3	<b>Z0365</b>
K7	<b>Z0366</b>
K30	<b>Z0367</b>
K32	<b>Z0368</b>

**USA MADE**






# Vise Stops & Arbor Press Work Stop **USA MADE**

## E-Z Vise Stop

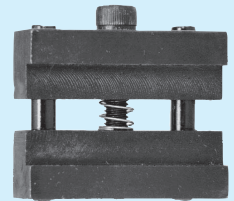
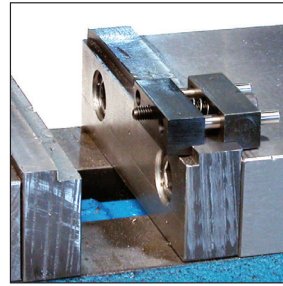
**Our quickest and easiest to use Vise Work Stop.**

- Attaches to any Vise jaw (1/2" thru 1" wide) with one screw adjustment.
- Made from hardened steel, with protective Black Oxide coating.
- Stop is 1" wide by 1-7/16" long.
- Made In USA.

Order Number

Z9030

**USA MADE**



## Mini Vise Stop

**A handy low cost Work Stop for vises.**

Has the capacity to accept jaws up to 0.740" wide, and the three socket screws provide a secure stop.

Order Number

Z9029

**USA MADE**



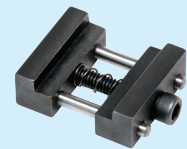
## Mini Stop

Can be used on vise jaws up to .740" wide.

Order Number

Z9031

**USA MADE**



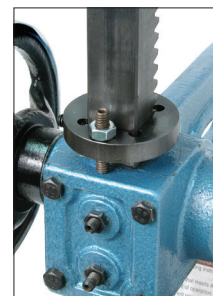
## Arbor Press Work Stop

Manufactured in the USA of hardened steel, this is a handy stop that fits most standard Arbor Presses. A quick and secure double set screw mounting system provides a positive lock, that stops the ram of the arbor press at your pre-set point. An adjustment screw allows fine adjustment of the ram travel.

Speeds up and improves the quality of production and prototype operations.

Arbor Press Work Stops		
Fits	OD	Order Number
3/4" Square Ram	2"	Z1197
1" Square Ram	2-1/8"	Z1198
1-1/4" Square Ram	2-1/4"	Z1199

**USA MADE**



Accurate  
Manufactured  
Products  
Group

Phone: 317-472-9000 • FAX: 317-472-9010 • email: sales@ampg.com • www.ampg.com

INFO@SWIFTTOOL.COM

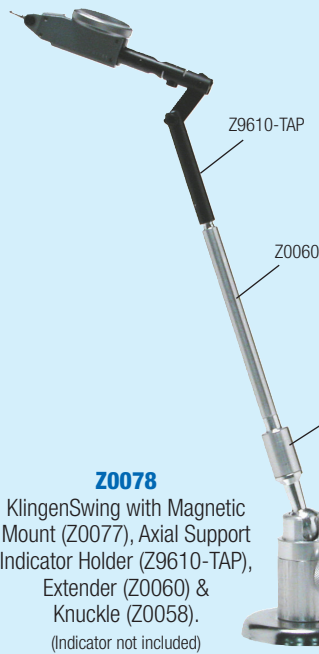
WWW.SWIFTTOOL.COM



G13



# The KlingenSwing

**USA** **MADE**


Description	Order Number
KlingenSwing with Magnetic Back	Z0077
KlingenSwing with 3/8-16 internal Threads for Mounting	Z0076
KlingenSwing with Extender and Axial Support Indicator Holder	Z0078
KlingenSwing with Knuckle and 6" X 8" Chip Shield	Z0075
KlingenSwing with Long Knuckle and Chip Shield	Z0075-EXT
Axial Support Attachment—Internal Tap Connection	Z9610-TAP
Swivel Clamp—3/8" Clamp	Z7012
KlingenSwing Knuckle—.665 Dia X 1-5/16" Length	Z0058
KlingenSwing Long Knuckle—.665 Dia X 4-1/4" Lth	Z0059
KlingenSwing Solid Clamping Bar—no threads or attachment points (for use with Indicator Clamps - 3/8" Dia X 5-3/4" Lth)	Z0062
KlingenSwing Extender Bar—3/8" Dia X 4-1/4" Lth—External & Internal Thds	Z0060
KlingenSwing Lexan Chip Shield—6 X 8 Shield w/clamp	Z0061

**Z9610-TAP**  
Axial Support Attachment with Internal Tap Connection



**SPECIAL ORDERS  
AVAILABLE—  
Small Quantities  
to Large Volume**


**USA** **MADE**
