

# Industrial Grinders, Buffers, Accessories & Replacement Parts

11G  
Effective Date:  
June 1, 2016



**BALDOR®**  
A MEMBER OF THE ABB GROUP

## TABLE OF CONTENTS

### Bench and Pedestal Grinders

6 Inch & 7 inch . . . . .	1
8 Inch & 10 inch . . . . .	2
12 inch & 14 inch Exhaust Type Heavy Duty . . . . .	3
12 Inch & 14 inch Wheels . . . . .	3

### Tool Grinders

6 Inch Carbide Tool Grinder . . . . .	4
6 Inch Diamond Wheel Grinder . . . . .	4
Wheels and Accessories . . . . .	4

### Belt Sanders and Buffers

Stationary Abrasive Belt Sander . . . . .	5
Industrial Abrasive Belt Sander - Three Position Tilttable . . . . .	5
Adjustable Speed Belt Sander . . . . .	5
Combination Abrasive Belt Sander/Grinder . . . . .	5
Industrial Buffers . . . . .	5

### Big Red Grinders

6 Inch . . . . .	6
7 Inch . . . . .	6
8 Inch . . . . .	6
Pedestals and Lighted Eyeshields . . . . .	6

### Accessories . . . . . 7-8

### Polishing Lathes, Chucks and Dust Collector Bags . . . . . 9

### Mod Express® Ordering Information . . . . . 10

### Mod Express® Description and List Price . . . . . 11-12

### General Information . . . . . 13

### Replacement Parts

Grinders 6" and 7" – Buffers – 1/4 Hp and 1/3 Hp . . . . .	14
Grinders 8", 10", 12" and 14" – Buffers – 3/4 Hp thru 10 Hp . . . . .	15
Carbide and Diamond Wheel Grinders . . . . .	16
Abrasive Belt Grinders . . . . .	17-19
Dust Control Accessories . . . . .	20
Eyeshields . . . . .	21
Pedestals . . . . .	22

### Baldor District Offices . . . . . Back Cover

#### FULL 3 YEAR WARRANTY

#### ALL BALDOR GRINDER AND BUFFER PRODUCTS WARRANTED THREE FULL YEARS

Baldor grinder and buffer products are warranted against burnouts, defective materials, and workmanship for three full years.

Warranty covers all parts except those subject to normal wear such as wheels.

PRICES ARE SUBJECT TO CHANGE WITHOUT NOTICE

## Industrial Grinders


**600E**

Cast aluminum wheel guards can be exhausted or left closed. 8-foot power cord. Base mounted on/off switch. Rubber feet minimize vibration.

Hp	RPM	Wheel Size	Catalog Number	List Price	Mult. Sym.	Shpg. Wgt.	Voltage	Style	Agency Approval	Notes
1/3	3600	6"x3/4"x1/2"	<b>600E</b>	343	G1	30	115	Grinder	UL	a,c,p
1/3	3600	6"x3/4"x1/2"	<b>602E</b>	343	G1	30	115	Grinder/Buffer	UL	b,c,p

**EXERCISE CAUTION AND WEAR SAFETY GLASSES**

Cast aluminum non-exhaust type wheel guards. 8-foot power cord. Base mounted on/off switch. Rubber feet to minimize vibration.

Hp	RPM	Wheel Size	Catalog Number	List Price	Mult. Sym.	Shpg. Wgt.	Voltage	Style	Agency Approval	Notes
1/3	3600	6"x3/4"x1/2"	<b>612</b>	388	G1	30	115	Grinder	UL, CSA	a,c,f,p
1/3	3600	6"x3/4"x1/2"	<b>662</b>	388	G1	29	115	Grinder/Buffer	UL, CSA	b,c,f,p

**EXERCISE CAUTION AND WEAR SAFETY GLASSES**

**623E**

Cast iron exhaust type wheel guards. 8-foot power cord. Base mounted on/off switch. Rubber feet to minimize vibration.

Hp	RPM	Wheel Size	Catalog Number	List Price	Mult. Sym.	Shpg. Wgt.	Voltage	Style	Agency Approval	Notes
1/4	1800	6"x3/4"x1/2"	<b>632E</b>	555	G1	47	115	Grinder		a,d,p
1/3	3600	6"x3/4"x1/2"	<b>612E</b>	524	G1	44	115	Grinder	UL, CSA	a,c,p
1/3	3600	6"x3/4"x1/2"	<b>623E</b>	555	G1	47	115	Grinder	UL	a,d,p
1/3	3600	6"x3/4"x1/2"	<b>623ED</b>	721	G1	61	115	Grinder		a,d,e
1/3	3600	6"x3/4"x1/2"	<b>662E</b>	524	G1	43	115	Grinder/Buffer	UL, CSA	a,c,p
1/3	3600	6"x3/4"x1/2"	<b>673E</b>	555	G1	47	115	Grinder/Buffer	UL	a,d,p

**EXERCISE CAUTION AND WEAR SAFETY GLASSES**

Cast iron exhaust type wheel guards. 8-foot power cord. Base mounted on/off switch. Rubber feet to minimize vibration.


**7306**

Hp	RPM	Wheel Size	Catalog Number	List Price	Mult. Sym.	Shpg. Wgt.	Voltage	Style	Agency Approval	Notes
1/2	3600	7"x1"x5/8"	<b>712</b>	563	G1	45	115	Grinder	UL, CSA	a,c,f,p
1/2	3600	7"x1"x5/8"	<b>762</b>	563	G1	43	115	Grinder/Buffer	UL, CSA	b,c,f,p
1/2	3600	7"x1"x5/8"	<b>712E</b>	660	G1	68	115	Grinder	UL, CSA	a,c,p
1/2	3600	7"x1"x5/8"	<b>762E</b>	660	G1	68	115	Grinder/Buffer	UL, CSA	b,c,p
1/2	1800	7"x1"x5/8"	<b>7306</b>	714	G1	70	115/230	Grinder	UL	a,d,g,p
1/2	3600	7"x1"x5/8"	<b>7307</b>	714	G1	70	115/230	Grinder	UL, CSA	a,d,g,p
1/2	3600	7"x1"x5/8"	<b>7351</b>	714	G1	67	115/230	Grinder/Buffer	UL, CSA	b,d,g,p
1/2	1800	7"x1"x5/8"	<b>7308</b>	714	G1	71	208-230-4600	Grinder	UL, CSA	a,d,h,p
1/2	3600	7"x1"x5/8"	<b>7309</b>	714	G1	72	208-230-4600	Grinder	UL, CSA	a,d,h,p
1/2	1800	7"x1"x5/8"	<b>7306D</b>	899	G1	84	115/230	Grinder	UL	a,d,e,g
1/2	3600	7"x1"x5/8"	<b>7307D</b>	899	G1	84	115/230	Grinder	UL	a,d,e,g
1/2	3600	7"x1"x5/8"	<b>7309D</b>	899	G1	87	208-230/460	Grinder	UL, CSA	a,d,e,h
1/2/1/3	1800/3600	7"x1"x5/8"	<b>7312D</b>	1087	G1	90	115	Grinder	UL	a,d,e

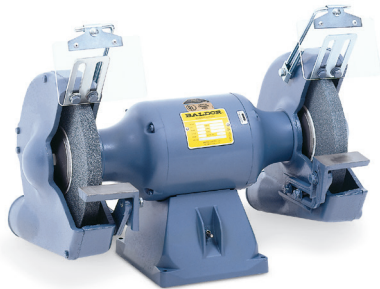
**EXERCISE CAUTION AND WEAR SAFETY GLASSES**
**NOTES:**

- (a) Supplied with 36 & 60 grit wheels.
- (b) Supplied with 36 grit and 0.014 wire wheel.
- (c) Stamp steel tool rests.
- (d) Cast iron tool rests.
- (e) Deluxe model includes water pot, tool tray and lighted eyeshields.
- (f) Non-exhaust type wheel guards.
- (g) Factory connected for 115 volts, power cord supplied.
- (h) Factory connected for 208-230 volts, no power cord.
- (p) Supplied with eye shield.


**7306D**

## Industrial Grinders


**8100W**

**8100WD**

**1022W**

**1022WD**

All models have cast iron tool rests and exhaust type wheel guards. 8-foot power cord. Base mounted on/off switch. Rubber feet to minimize vibration.

Hp	RPM	Wheel Size	Catalog Number	List Price	Mult. Sym.	Shpg. Wgt.	Voltage	Style	Agency Approval	Notes
3/4	1800	8"x1"x3/4"	<b>8100W</b>	1081	G1	99	115/230	Grinder	UL	a,g,p
3/4	1800	8"x1"x3/4"	<b>8100WD</b>	1234	G1	110	115/230	Grinder	UL	a,e,g
3/4	3600	8"x1"x3/4"	<b>8107W</b>	1081	G1	99	115/230	Grinder	UL	a,g,p
3/4	3600	8"x1"x3/4"	<b>8107WD</b>	1234	G1	111	115/230	Grinder	UL	a,e,g
3/4	3600	8"x1"x3/4"	<b>8250W</b>	1081	G1	97	115/230	Grinder/Buffer	UL	b,g,p
3/4	1800	8"x1"x3/4"	<b>8102W</b>	1047	G1	98	208-230/460	Grinder	UL,CSA	a,h,p
3/4	1800	8"x1"x3/4"	<b>8102WD</b>	1215	G1	111	208-230/460	Grinder	UL,CSA	a,e,h
3/4	3600	8"x1"x3/4"	<b>8123W</b>	1047	G1	99	208-230/460	Grinder	UL,CSA	a,h,p
3/4	3600	8"x1"x3/4"	<b>8123WD</b>	1215	G1	112	208-230/460	Grinder	UL,CSA	a,e,h
3/4	3600	8"x1"x3/4"	<b>8252W</b>	1047	G1	95	208-230/460	Grinder/Buffer		b,h,p
3/4	3600	8"x1"x3/4"	<b>8125W</b>	1047	G1	99	575	Grinder	UL	a,i,p

**EXERCISE CAUTION AND WEAR SAFETY GLASSES**

All models have cast iron tool rests and exhaust type wheel guards. Base mounted on/off switch. Rubber feet to minimize vibration.

Hp	RPM	Wheel Size	Catalog Number	List Price	Mult. Sym.	Shpg. Wgt.	Voltage	Style	Agency Approval	Notes
1	1800	10"x1"x7/8"	<b>1022W</b>	1380	G1	133	115/230	Grinder	UL	a,j,p
1	1800	10"x1"x7/8"	<b>1022WD</b>	1580	G1	145	115/230	Grinder	UL	a,e,j
1-1/2	1800	10"x1"x7/8"	<b>1021W</b>	1360	G1	134	208-230/460	Grinder	UL,CSA	a,h,p
1-1/2	1800	10"x1"x7/8"	<b>1021WD</b>	1558	G1	146	208-230/460	Grinder	UL,CSA	a,e,h
1-1/2	1800	10"x1"x7/8"	<b>105W</b>	1360	G1	133	575	Grinder	UL,CSA	a,i,p

**EXERCISE CAUTION AND WEAR SAFETY GLASSES**

### NOTES:

- (a) Supplied with 36 & 60 grit wheels.
- (b) Supplied with 36 grit and 0.014 wire wheel.
- (e) Deluxe model includes water pot, tool tray and lighted eyeshields.
- (g) Factory connected for 115 volts, power cord supplied.
- (h) Factory connected for 208-230 volts, no power cord.
- (i) 575 volt, 50//60 Hz.
- (j) Factory connected for 115 volts, no power cord.
- (p) Supplied with eye shield.

## Industrial Grinders

### 12 Inch



**BALDOR**  
 Catalog #1215W  
 with #GA20 Pedestal  
 (sold separately)

Cast iron tool rests & exhaust type wheel guards. Manual starter with overload protection. Also includes lighted eyeshield (bulb not included). All three-phase units are suitable for 50/60 Hz, 1500/1800 RPM operation. Wheels sold separately. See chart below.

Hp	RPM	Wheel Size	Catalog Number	List Price	Mult. Sym.	Shpg. Wgt.	Voltage	Style	Agency Approval	Notes
2	1800	12"X2"X1-1/4"	<b>1215W</b>	3102	G1	253	208-230/460	Grinder	CSA	k
3	1800	12"X2"X1-1/4"	<b>1216W</b>	3212	G1	254	208-230/460	Grinder	CSA	k
2	1800	12"X2"X1-1/4"	<b>1217W</b>	3285	G1	259	115/230	Grinder		J
3	1800	12"X2"X1-1/4"	<b>129W</b>	3212	G1	256	575	Grinder	CSA	i

**EXERCISE CAUTION AND WEAR SAFETY GLASSES**

### 14 Inch



**BALDOR**  
 Catalog #1407W  
 with #GA20 Pedestal  
 (sold separately)

Cast iron tool rests & exhaust type wheel guards. Magnetic starter with overload protection. Also includes lighted eyeshields (bulbs not included). Suitable for 50/60 Hz operation. Wheels sold separately. See chart below.

Hp	RPM	Wheel Size	Catalog Number	List Price	Mult. Sym.	Shpg. Wgt.	Voltage	Style	Agency Approval	Notes
5	1800	14"X3"X1-1/4"	<b>1406W</b>	3980	G1	359	230	Grinder	CSA	m
5	1800	14"X3"X1-1/4"	<b>1410W</b>	3980	G1	362	460	Grinder		m
5	1800	14"X3"X1-1/4"	<b>1408W</b>	3980	G1	358	575	Grinder	CSA	m
7-1/2	1800	14"X3"X1-1/4"	<b>1407W</b>	4341	G1	372	230	Grinder	CSA	m
7-1/2	1800	14"X3"X1-1/4"	<b>1411W</b>	4341	G1	381	208-230/460	Grinder		m
7-1/2	1800	14"X3"X1-1/4"	<b>1409W</b>	4341	G1	374	575	Grinder	CSA	m

**EXERCISE CAUTION AND WEAR SAFETY GLASSES**

## Wheels for 12-Inch and 14-Inch Grinders

High quality aluminum oxide and silicon abrasive in a premium vitrified system

Catalog Number	List Price	Mult. Sym.	Diameter	Face	Bore	Grit	Shpg. Wgt.
<b>B125</b>	238	A8	12"	2"	1-1/4"	30	22
<b>B126</b>	240	A8	12"	2"	1-1/4"	46	22
<b>B147</b>	449	A8	14"	3"	1-1/4"	30	42
<b>B148</b>	449	A8	14"	3"	1-1/4"	46	41

**NOTE:** When installing new wheels, check wheels for possible damage. Do not use a damaged wheel.

With new wheel installed, all safety guards in place and operator standing away from front of grinder, run grinder for one minute before apply work.

**EXERCISE CAUTION AND WEAR SAFETY GLASSES**

#### NOTES:

- (i) 575 volt, 50//60 Hz.
- (J) Factory connected for 115 volts, no power cord.
- (K) Factory connected for 230, manual starter, specify voltage when ordering.
- (m) Factory connected for 230, magnetic starter must be changed for other voltages

## Industrial Tool Grinders

### Diamond Wheel Grinder



Catalog #522

Baldor Diamond Wheel Tool Grinders feature all cast iron construction. Precision built, they have locked double row bearings and a maximum runout of .002 for precise tool and die work. Accommodates cup wheels with 1-1/4" center hole. Large tool tables with protractor type tool support. Light and water pot with spout and faucet that can be moved to either side are standard equipment. Diamond wheels sold separately. See chart below.

Hp	RPM	Cup Wheel Size	Catalog Number	List Price	Mult. Sym.	Shpg. Wgt.	Voltage	Style	Agency Approval	Notes
1/2	3600	6"x1"x1-1/4"	<b>522</b>	1736	G1	108	115	Tool Grinder	UL	g
1/2	3600	6"x1"x1-1/4"	<b>532</b>	1736	G1	109	208-230/460	Tool Grinder	UL	h

**NOTE:** Rough service bulb is suggested.

**EXERCISE CAUTION AND WEAR SAFETY GLASSES**

### Carbide Tool Grinder



Catalog #500

Baldor Carbide Tool Grinders feature all cast iron construction. Accommodates cup wheels with 1-1/4" center hole. Large tool tables with protractor type tool support. Light and water pot with spout and faucet that can be moved to either side are standard equipment. Wheels sold separately. See chart below.

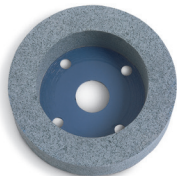
Hp	RPM	Wheel Size	Catalog Number	List Price	Mult. Sym.	Shpg. Wgt.	Voltage	Style	Agency Approval	Notes
1/2	3600	6"x1"x1-1/4"	<b>500</b>	1544	G1	109	115	Tool Grinder	UL	g
1/2	3600	6"x1"x1-1/4"	<b>510</b>	1544	G1	109	208-230/460	Tool Grinder	UL	h

**NOTE:** Rough service bulb is suggested

**EXERCISE CAUTION AND WEAR SAFETY GLASSES**



Catalog #D501



Catalog #C61

### Wheels and Accessories

Catalog Number	List Price	Mult. Sym.	Shpg. Wgt.	Face	Grit	Description
<b>D501</b>	994	A8	5	3/4"	120	General Purpose Diamond Wheel
<b>D502</b>	994	A8	2	3/4"	220	Fine Finish Diamond Wheel
<b>C61</b>	217	A8	5	1"	60	Silicone Carbide
<b>C121</b>	217	A8	3	1"	120	Silicone Carbide
<b>S46</b>	143	A8	3	1"	46	Aluminum Oxide
<b>S61</b>	143	A8	3	1"	60	Aluminum Oxide
<b>GA8</b>	525	A8	1	Wheel Dresser with Diamond NIB		
<b>GA7</b>	143	A8	1	Diamond NIB for GA8 (7/16 diameter x 1" long)		

**NOTE:** When installing new wheels, check wheel for possible damage. Do not use a damaged wheel. With new wheel installed and all safety guards in place, and operator is standing away from front of grinder, run grinder for one minute before applying work.

**EXERCISE CAUTION AND WEAR SAFETY GLASSES**

#### NOTES:

(g) Factory connected for 115 volts, power cord supplied.

(h) Factory connected for 208-230 volts, no power cord.



GA8



GA7

## Industrial Abrasive Belt Sanders

Baldor offers several options when it comes to industrial belt sanders, fixed and tiltable belts, grinder/sanders and even an adjustable speed sander for increased flexibility. All units come with a base mounted on/off switch. 602E-MT equipped with 2x36" 100 grit belt, all others 2x48" 80 grit belt.



Catalog #602E-MT

Catalog #248-151D

Catalog #248-181TD

Catalog #248-151TD

Catalog #248-151AS

Hp	RPM	Tiltable belt	Catalog Number	List Price	Mult. Sym.	Shpg. Wgt.	Voltage	Style	Agency Approval	Notes
1/3	3600	Multi-Position	<b>602E-MT</b>	867	G1	47	115	Grinder/Belt Sander		g,n,r
1-1/2	3600	Fixed	<b>2048-151D</b>	1777	G1	88	115/230	Belt Sander	UL	g
1-1/2	3600	Fixed	<b>2048-153D</b>	1693	G1	76	208-230/460	Belt Sander	UL	h
1-1/2	3600	Three positions	<b>248-151TD</b>	1966	G1	95	115/230	Belt Sander	UL	g
1-1/2	3600	Three positions	<b>248-153TD</b>	1855	G1	84	208-230/460	Belt Sander	UL	h
1-1/2	3600	Three positions	<b>248-181TD</b>	2267	G1	138	115/230	Grinder/Belt Sander		J,l,r
1-1/2	3600	Three positions	<b>248-183TD</b>	2224	G1	128	208-230/460	Grinder/Belt Sander	UL	h,l,r
1-1/2	0-3600	Three positions	<b>248-151AS</b>	2494	G1	105	115	Adjustable Speed		g,l

EXERCISE CAUTION AND WEAR SAFETY GLASSES

## Industrial Buffers

Buffers are designed for use with soft cloth wheels **ONLY**. Specific buffing applications may require the addition of operator safety devices. Consult with a safety engineer before installation. Price includes flanges and nuts but **does not** include wheels.



Catalog #333B



Catalog #1458  
with #GA20 Pedestal  
(sold separately)

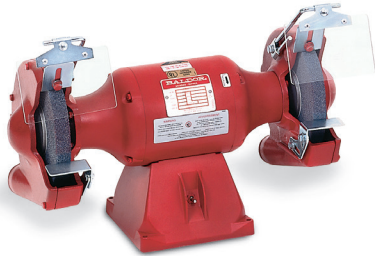
Hp	RPM	Diameter Max.	Width Min/Max	Shaft Diameter	Catalog Number	List Price	Mult. Sym.	Shpg. Wgt.	Voltage	Agency Approval	Notes
1/4	1800	6"	0.5/0.75	1/2"	<b>114</b>	393	G1	24	115		g,s
1/3	3600	6"	0.5/0.75	1/2"	<b>111</b>	393	G1	25	115		g,s
3/4	1800	8"	0.38/1.25	3/4"	<b>332B</b>	772	G1	55	115/230		g,s
3/4	3600	8"	0.38/1.25	3/4"	<b>333B</b>	772	G1	56	115/230		g,s
3/4	1800	8"	0.38/1.25	3/4"	<b>334B</b>	754	G1	54	208-230/460	CSA	h,s
3/4	3600	8"	0.38/1.25	3/4"	<b>330B</b>	754	G1	56	208-230/460	CSA	h,s
1	1800	10"	0.5/1.25	7/8"	<b>407B</b>	1024	G1	60	115/230		j,s
1-1/2	3600	10"	0.5/1.25	7/8"	<b>410B</b>	1007	G1	61	115/230		j,s
1-1/2	1800	10"	0.5/1.25	7/8"	<b>409B</b>	983	G1	59	208-230/460	CSA	h,s
1-1/2	3600	10"	0.5/1.25	7/8"	<b>412B</b>	983	G1	62	208-230/460	CSA	h,s
2	1800	12"	2.0/2.5	1-1/4"	<b>1250</b>	2373	G1	164	115/230		k
2	3600	12"	2.0/2.5	1-1/4"	<b>1251</b>	2305	G1	160	115/230		k
3	1800	12"	2.0/2.5	1-1/4"	<b>1252</b>	2179	G1	156	208-230/460	CSA	k
3	3600	12"	2.0/2.5	1-1/4"	<b>1253</b>	2117	G1	156	208-230/460	CSA	k
5	1200	14"	2.5/3.0	1-1/4"	<b>1457</b>	3181	G1	228	230	CSA	m
5	1800	14"	2.5/3.0	1-1/4"	<b>1458</b>	2708	G1	218	230	CSA	m
7-1/2	1800	14"	2.5/3.0	1-1/4"	<b>1454</b>	3024	G1	229	230	CSA	m
7-1/2	3600	14"	2.5/3.0	1-1/4"	<b>1453</b>	2862	G1	223	230	CSA	m

EXERCISE CAUTION AND WEAR SAFETY GLASSES

### NOTES:

- (g) Factory connected for 115 volts, power cord supplied.
- (h) Factory connected for 208-230 volts, no power cord.
- (j) Factory connected for 115 volts, no power cord.
- (k) Factory connected for 230, manual starter, specify voltage when ordering.
- (l) Supplied with 8"x1"x3/4" 36 grit wheel and 80 grit belt.
- (m) Factory connected for 230, magnetic starter must be changed for other voltages.
- (n) Supplied with 0.014 wire wheel and 36"x2" 100 grit belt.
- (r) Grinder side eye shield included.
- (s) Base mounted on-off switch.

## Big Red Grinders


**600RE**

**812RE**

Big Red Grinders are available with 6", 7" or 8" wheels, equipped with base mounted on/off switch and 8 foot cord with plug. Rubber mounting feet help minimize vibration. Models ending in "E" have exhaust type wheel guards.

Hp	RPM	Wheel Size	Catalog Number	List Price	Mult. Sym.	Shpg. Wgt.	Voltage	Style	Agency Approval	Notes
1/3	3600	6"x3/4"x1/2"	<b>600RE</b>	343	G1	29	115	Grinder	UL	a,c,p
1/3	3600	6"x3/4"x1/2"	<b>602RE</b>	343	G1	27	115	Grinder/Buffer	UL	b,c,p
1/3	3600	6"x3/4"x1/2"	<b>612R</b>	388	G1	30	115	Grinder	UL,CSA	a,c,f,p
1/3	3600	6"x3/4"x1/2"	<b>662R</b>	388	G1	29	115	Grinder/Buffer	UL,CSA	b,c,f,p
1/2	3600	7"x1"x5/8"	<b>712R</b>	563	G1	45	115	Grinder	UL,CSA	a,c,f,p
1/2	3600	7"x1"x5/8"	<b>762R</b>	563	G1	43	115	Grinder/Buffer	UL,CSA	b,c,f,p
1/2	3600	7"x1"x5/8"	<b>712RE</b>	675	G1	68	115	Grinder	UL,CSA	a,c,p
1/2	3600	7"x1"x5/8"	<b>762RE</b>	675	G1	66	115	Grinder/Buffer	UL,CSA	b,c,p
3/4	3600	8"x1"x3/4"	<b>812RE</b>	1022	G1	96	115/230	Grinder	UL	a,c,g,p
3/4	3600	8"x1"x3/4"	<b>862RE</b>	1022	G1	95	115/230	Grinder/Buffer	UL	a,c,g,p

**EXERCISE CAUTION AND WEAR SAFETY GLASSES**

## Big Red Accessories Pedestals


**GA16R**
**GA14R**

## Lighted Eyeshields


**GA9R**
**GA9SR**

Catalog Number	Description	List Price	Mult. Sym.	Shpg. Wgt.
<b>GA16R</b>	Cast iron pedestal can be used on all Big Red Grinders Height is 32-7/8"	536	A8	62
<b>GA16RE</b>	Light industrial version, all steel construction for use on 6" & 7" only, height is 34"	319	A8	36
<b>GA20RE</b>	Light industrial version, all steel construction for use on 8" only, height is 34"	369	A8	54
<b>GA14R</b>	Fabricated steel pedestal with storage shelves can be used on all Big Red Grinders, height is 34-1/2"	369	A8	64
<b>GA9R</b>	2) Lighted eyeshield, 5-1/2" x 3-3/4" viewing area, 8-ft cord with plug, mounts to any Big Red Grinder	206	A8	5
<b>GA9SR</b>	2) Lighted eyeshield with on/off switch, 5-1/2" x 3-3/4" viewing area, 8-ft cord with plug, mounts to any Big Red Grinder	229	A8	5

### NOTES:

- (a) Supplied with 36 & 60 grit wheels.
- (b) Supplied with 36 grit and 0.014 wire wheel.
- (c) Stamp steel tool rests.
- (d) Cast iron tool rests.
- (f) Non-exhaust type wheel guards.
- (g) Factory connected for 115 volts, power cord supplied.
- (p) Supplied with eye shield.

## Accessories

### Dust Control Units for Baldor Grinders, 115V, Single Phase, 60 Hz



Catalog #1022W  
with DC10 and GA16  
(sold separately)

**NOTE:** Do not collect potentially reactive materials without consulting (NFPA) National Fire Protection Association Standards.

Powered by a 1/2 Hp TEFC single phase Baldor motor with cord, switch, and plug.

230 volt single phase units are available and supplied less switch, cord, and plug. Specify for 230 volt single phase operation.

Collectors with three phase motor less cord, switch, and plug are available. For 208-230/460 volt three phase, add suffix -3 to catalog number. Add \$30.00 to list price. Mount dust control units with Grinder and GA16 or GA20 pedestal.

Catalog Number	Dust Control Unit Price	Mult. Sym.	Grinding Wheel Maximum		Cubic Ft/Min		Air Control Valves	Shpg. Wgt.
			Dia.	Width	Total Cap.	Required Per Wheel By OSHA <sup>(o)</sup>		
DC7	1464	A8	7"	1"	440	220	Yes	60
DC8	1464	A8	8"	1"	440	220	Yes	62
DC10	1464	A8	10"	1"	440	390	Yes <sup>(p)</sup>	60
DC12	1591	A8	12"	2"	440	390	Yes <sup>(p)</sup>	62
DC12-3	1591	A8	12"	2"	440	390	Yes <sup>(p)</sup>	57
DC14-3 <sup>(n)</sup>	2596	A8	14"	3"	700	590	Yes <sup>(p)</sup>	73

#### EXERCISE CAUTION AND WEAR SAFETY GLASSES

<sup>(n)</sup> DC14-3 powered with 1Hp TEFC 208-230/460 volt, three phase motor, less cord, switch, and lug.

<sup>(o)</sup> From ventilation section 1910.94 table G-4 Federal register vol. 37 #202, 10-18-72.

<sup>(p)</sup> Air control valve required to direct total CFM of collector to only the wheel being used to meet OSHA CFM requirements on 10" and larger grinders.

#### Replacement Filter Bags

Catalog Number	List Price	Mult. Sym.	Dust Control Unit	Shpg. Wgt.
ARB-1	152	A8	DC7, 8, 10, 12, 12-3	1
ARB-2	231	A8	DC14-3	2

## Accessories

### Grinder and Buffer



Item Number	Catalog Number	Description	List Price	Mult. Sym.	Shpg. Wgt.
A	GA16	Pedestal "Cast Iron"	489	A8	62
	GA16E	"Steel"	319	A8	36
B	GA14	Pedestal "Steel"	369	A8	64
C	GA20	Pedestal "Cast Iron"	803	A8	119
	GA20E	"Steel"	369	A8	54
D	GA24	Water Pot	60	A8	1
E	GA3	Water Pot	162	A8	7
F	GA25	Tool Tray	59	A8	9
G	GA4	Tool Tray	187	A8	6
H	GA11	Eyeshield (pair)	99	A8	2
I	GA10	Eyeshield (pair)	94	A8	1
J	GA9	Lighted Eyeshield (less on/off switch) (pair)	206	A8	5
J-1	GA9-1	Same as GA9 except packed 1 unit per carton	114	A8	3
K	GA9S	Lighted Eyeshield (with on/off switch) (pair)	229	A8	6
L	GA13	Eyeshield for 6" Grinders (pair)	53	A8	2
M	AB248	Abrasive Belt 2" x 48" - 80 Grit	32	A8	1

(A) **GA16 Pedestal** for 6", 7", 8" and 10" grinders, carbide and diamond wheel grinders, 1/4 Hp through 1-1/2 Hp buffers and belt grinders. Height 32 7/8".

**GA16E** for 6" & 7" grinders "all steel construction". Height 34".

(B) **GA14 Pedestal** - fabricated steel, for 6", 7", 8" and 10" grinders, 1/4 Hp through 1 1/2 Hp buffers. Height 34 1/2".

(C) **GA20 Pedestal** for 8", 10", 12" and 14" grinders and 3/4 through 7-1/2 Hp buffers. Height 30".  
**GA20E** for 8" & 10" grinders "all steel construction". Height 34".

(D) **GA24 Water Pot** for 623E, 673E, 612E, 662E, and 7" (except #712, #712R, #762, & #762R), 8" and 10" grinders. Supplied with mounting bracket and swivel arm. Capacity 1-1/2 pints.

(E) **GA3 Water Pot** for GA20 pedestal. Capacity 3 pints.

(F) **GA25 Tool Tray** for 623E, 632E, 673E, 612E, 662E and 7" (except #712, #712R, #762, & #762R), 8" and 10" grinders. Supplied with mounting bracket and swivel arm. Diameter 8". Area 48 square inches.

(G) **GA4 Tool Tray** for GA20 pedestal. Dimensions 12" x 6".

(H) **GA11 Eyeshield** - 6" x 4" shatter resistant Plexiglas®. Fits Baldor grinders 7" through 14".

(I) **GA10 Eyeshield** - 5" x 4" shatter resistant Plexiglas®. Fits Baldor 6" grinders and #712, #712R, #762 and #762R.

(J) **GA9 Lighted Eyeshield** - 5 1/2" x 3 3/4" viewing area made of shatter resistant Plexiglas®. Supplied with 8 foot 3 conductor cord with plug. Accommodates standard 115 volt 60 watt bulb. Supplied less bulb and on/off switch. Mounts to Baldor grinders except tool and belt grinders. Adjusts horizontally and vertically. U.L. listed/CSA certified.

(J-1) **GA9-1** - Same as GA9 except packed 1 per carton. 115 volt only.

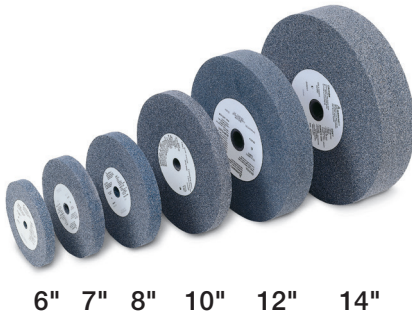
(K) **GA9S Lighted Eyeshield with On/Off Switch** - 115 volt only.

(L) **GA13 Eyeshield for 600 Series 6" Grinders**

(M) **AB248 Abrasive Belt** - 2" x 48" - 80 Grit.

## Accessories

### Wheels for Grinders

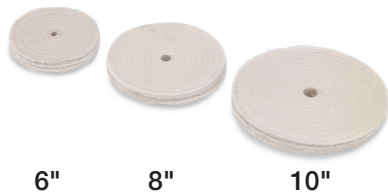


Extremely durable aluminum oxide abrasive grain. Excellent for steels and alloy steels. Ideal for numerous general purpose applications.

Catalog Number	List Price	Mult. Sym.	Diameter	Face	Bore	Grit	Shpg. Wgt.
B66	44	A8	6"	3/4"	1/2"	36	2
B67	44	A8	6"	3/4"	1/2"	60	2
B73	60	A8	7"	1"	5/8"	36	4
B74	60	A8	7"	1"	5/8"	60	3
B80	71	A8	8"	1"	3/4"	36	5
B81	71	A8	8"	1"	3/4"	60	4
B102	105	A8	10"	1"	7/8"	36	8
B103	105	A8	10"	1"	7/8"	60	6
B125	238	A8	12"	2"	1-1/4"	30	22
B126	240	A8	12"	2"	1-1/4"	46	22
B147	449	A8	14"	3"	1-1/4"	30	42
B148	449	A8	14"	3"	1 1/4"	46	41

**EXERCISE CAUTION AND WEAR SAFETY GLASSES**

### Sewed Cotton Buffing Wheels



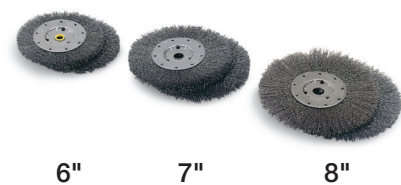
**Features:** Wheels are muslin cloth, spiral sewn. These bore sizes will fit shafts 1/8" greater diameter than bore.

Catalog Number	List Price	Mult. Sym.	Diameter	Face	Bore	Shpg. Wgt.
A65	31	A8	6"	1/4"	1/2"	1
A82	38	A8	8"	1/4"	3/4"	1
A103	57	A8	10"	1/4"	7/8"	1

**EXERCISE CAUTION AND WEAR SAFETY GLASSES**

**NOTE:** Cotton wheels are supplied in sections 1/4" wide. Two (or more) sections may be put together to make up wheel of desired width.

### Wire Brush Wheels



**Features:** Wheels are crimped, carbon steel wire.

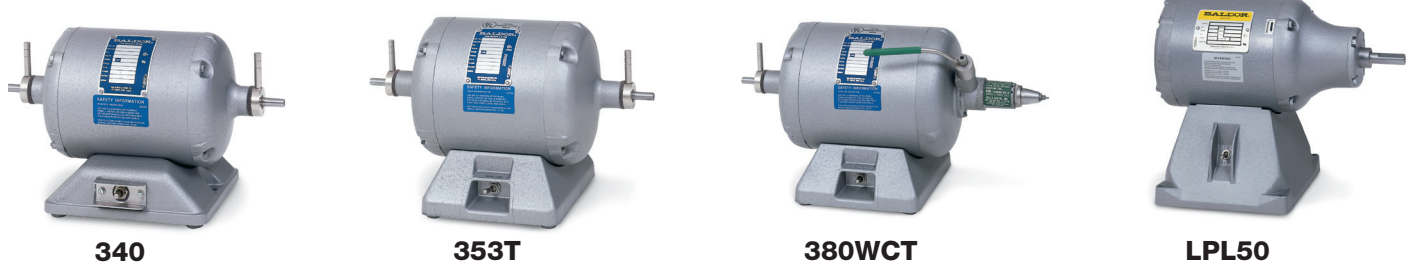
Catalog Number	List Price	Mult. Sym.	Diameter	Face	Bore	Diameter of Wire	Shpg. Wgt.
W64	53	A8	6"	5/8"	1/2"	0.014	1
W70	62	A8	7"	5/8"	5/8"	0.014	1
W82	70	A8	8"	3/4"	3/4"	0.014	1

**EXERCISE CAUTION AND WEAR SAFETY GLASSES**

**NOTE:** Baldor 6", 7" & 8" grinders equipped with grinding wheels can be converted to have wire brush wheels. To properly fit the wire brush wheels, flat washers or spacer must be placed on both sides of the wheel flanges. This will accommodate the width differences between the wire brush wheel and the original grinding wheel. Order washers/spacers as follows:  
 6" (3) HW1000A50, 7" (2) HA2047A01, 8"(4) HW1000A75

**NOTE:** When installing new wheels, check wheel for possible damage. Do not use a damaged wheel.  
 With new wheel installed and all safety guards in place, and operator standing away from front of grinder, run grinder for one minute before applying work.  
 (Wear safety glasses). **Exercise Caution.**

## Polishing Lathes, Chucks



Baldor polishing lathes have features preferred by dentists, dental lab technicians, jewelers, lapidary and other for precision, trouble-free polishing. All lathes are supplied with 8-foot cord with plug, rubber feet and heavy construction to minimize vibration, provisions for mounting to a laboratory bench are provided as well.

Hp	RPM	Shaft Diameter/Taper	Catalog Number	List Price	Mult. Sym.	Shpg. Wgt.	Voltage	Style	Notes
1/4	3600/1800	0.375 / 0.250	340	482	G1	31	115	Dual Speed	q
1/4	3000/1500	0.375 / 0.250	342	482	G1	31	220-240	Dual Speed	r
1/4	3600/1800	0.375 / 0.250	353T	529	G1	35	115	Dual Speed	q
1/2	3600	0.375 / 0.250	359T	530	G1	36	115	Single speed	q
1/3	3600/1800	0.375 / 0.250	380T	588	G1	42	115	Dual Speed	q
1/3	3600/1800	0.375 / 0.250	380WCT	1,355	G1	47	115	Dual Speed	q,s
1/2	3600	0.625 / straight	LPL50	515	G1	43	115	Single speed	q,t
3/4	3600	0.625 / straight	LPL75	628	G1	48	115/230	Single speed	q,t

### EXERCISE CAUTION AND WEAR SAFETY GLASSES

#### NOTES:

(q) Factory connected for 115 volts, power cord supplied.

(r) Factory connected for 220-240 volts, power cord without plug.

(s) Right side equipped with Wells Dental "Super Quick" chuck, 2 mandrels, 2 stone, 1 arbor band, 1 soft wheel chuck.

(t) Single shaft, right side.

## Baldor True-Running Chucks

Made to close-tolerance specifications, keeps vibration to an absolute minimum. All chuck guaranteed to match Baldor lathes and other make with standard tapered shaft. Mounting hole 0.370" tapered 0.250 per foot.



Catalog Number	List Price	Mult. Sym.	Description	Shpg. Wgt.
R1	96	A8	Hard Wheel, Right Hand, Brass	1
R2	47	A8	Soft Wheel, Right Hand, Brass	1
L3	92	A8	Hard Wheel, Left Hand, Brass	1
L4	107	A8	Soft Wheel, Left Hand, Brass	1
R5A	158	A8	Burr Chuck, Right Hand,	1
R6	53	A8	Arbor Band, Right Hand, Brass	1
L7	206	A8	Burr Chuck, Left Hand, Stainless	1

### EXERCISE CAUTION AND WEAR SAFETY GLASSES

**NOTE:** R1 & L3 hard wheel chucks accommodate up to 1/4" wide wheel with 1/4" arbor hole.

R6 arbor band chuck accommodates 1/2" wide x 3/4" diameter arbor band.

## Dust Collector Bags

Catalog Number	List Price	Mult. Sym.	Description	Shpg. Wgt.
DA1	58	A8	Dust Collector Bag (1 per carton). For Baldor D60 and D61 Dust Collectors	1

### FULL THREE YEAR WARRANTY

Baldor polishing lathes are warranted against burnouts, defective materials, and workmanship for three full years. Warranty covers all parts except those subject to normal wear. "Wells Quick Chuck" warranted one year by manufacturer.

## Motor MOD Express®

### Ordering Information

To order, specify the catalog number of the stock product and the MOD number. Use the motor discount for the product.

All modifications should be priced using the modification list price, applying the appropriate multiplier symbol for the product.

Lead times indicated are subject to availability of stock product in the Fort Smith Warehouse. Customer will absorb all freight costs when motor is shipped to Fort Smith from field warehouses.

### MOD Express Cancellation Policy

Should it be necessary to cancel an order after it is modified, but before it ships – a cancellation charge of double the modification charge will be invoiced to the customer. Any MOD order cancelled before modification is completed is subject to 25% cancellation charge.

Once shipped, modified product returned at purchaser's expense will be invoiced at double the MOD fee plus 10% restock fee.

Some modifications cannot be performed on UL, CSA, or UL/CSA Certified Grinders, Buffers, or Belt Sanders without voiding the Certification. In such instances, the Certification Mark(s) would need to be removed. Please contact your Baldor representative.

**Modification  
Number**
**Motor Mod Express®  
Description and List Price**
**Working Days  
Required**
**Mountings**
**M13H Mount Dust Control Unit on Grinders**

 TWO  
DAYS

Labor only to mount dust control unit.  
 Price does not include the dust control unit or any accessories.  
 See Accessories to order Dust Control Unit.

Wheel Size	List Price Per Grinder
All	213

**M13I Mount Grinder or Buffer onto Pedestal**

 TWO  
DAYS

Price does not include the grinder or buffer, pedestal or any accessories.

Wheel Size	List Price Per Grinder or Buffer
All	213

**Starters**
**Add Magnetic or Manual Starter to Grinder or Buffer**

Mounted and wired on Baldor industrial grinders and buffers. Starters are in NEMA 1 enclosure and have the push button in cover. Available only as factory installed options.

Lead time is dependent on delivery of the starter.

**Price of the starter is included.**

**M36A Starter – Single Phase**

 TWO  
DAYS

Full voltage control.

Some modifications cannot be performed on UL, CSA, or UL/CSA Certified Grinders, Buffers, or Belt Sanders without voiding the Certification. In such instances, the Certification Mark(s) would need to be removed. Please contact your Baldor representative.

Grinder Wheel Size	Buffer Hp	Manual	Magnetic	
		115/230 Volts List Price	115 Volts List Price	230 Volts List Price
6"	1/3	503	825	922
7"	N/A	503	825	922
8"	3/4	503	946	922
10"	1	503	946	922
N/A	1-1/2	503	946	810
12"	2	Standard Equipment	803*	810*

**NOTE:** Specify voltage when ordering. \*Price includes allowance for omission of standard starter.

**Modification  
Number**
**Motor Mod Express®  
Description and List Price**
**Working Days  
Required**
**Starters continued...**
**M36B Starter – Three Phase**

 TWO  
DAYS

 Full voltage control. **Price of the starter is included.**

Some modifications cannot be performed on UL, CSA, or UL/CSA Certified Grinders, Buffers, or Belt Sanders without voiding the Certification. In such instances, the Certification Mark(s) would need to be removed. Please contact your Baldor representative.

Grinder Wheel Size	Buffer Hp	Manual	Magnetic	
		208-230/460 Volts	208-230 Volts	460 Volts
		List Price	List Price	List Price
7"	N/A	581	922	850
8"	N/A	581	922	850
10"	3/4	581	922	850
12"	1	Standard Equipment	650*	597*
12"	2	Standard Equipment	650*	597*

**NOTE:** Specify voltage when ordering. \*Price includes allowance for omission of standard starter.

**M36C Magnetic Starter – Three Phase**

 TWO  
DAYS

With Low Voltage Control.

**Price of the starter is included.**

Some modifications cannot be performed on UL, CSA, or UL/CSA Certified Grinders, Buffers, or Belt Sanders without voiding the Certification. In such instances, the Certification Mark(s) would need to be removed.

Please contact your Baldor representative.

Grinder Wheel Size	Buffer Hp	Magnetic With 110 Volt Control Circuit Transformer	
		208-230 Volts	460 Volts
		List Price	List Price
7"	N/A	2071	2291
8"	N/A	2071	2291
10"	3/4	2071	2291
12"	1	2032*	2074*
12"	2	2032*	2074*
14"	5	2032*	2074*
14"	7-1/2	2032*	2074*

**NOTE:** Specify voltage when ordering.

\*Price includes allowance for omission of standard starter.

**M36D Overload Protection for Dust Control Unit**

 TWO  
DAYS

**Price of the starter is included.**

NEMA Frame	List Price
All	619

**NOTE:** Must be used with magnetic control. Contact Baldor for details.

**Voltage**
**M37A Change a Grinder Dust Control Unit from  
230/460 Volts to 575 Volts**

 TWO  
DAYS

NEMA Frame	List Price
All	184

## General Information

This catalog shows the most commonly requested replacement parts for Baldor grinders, buffers, dust control units and accessories. For replacement parts not shown, please provide complete description and nameplate data especially noting the Baldor Specification Number (Spec. No.). Please contact your local Baldor representative for pricing and availability.

## Freight Policy

Shipments of stock grinders and buffers shown in this catalog are made with the selling terms of F.O.B. factory, Fort Smith Distribution Center, or a Baldor District Warehouse. International shipments – Ex Works, Non-stock items – F.O.B. factory. Baldor will prepay and absorb freight charges, on a carrier chosen by Baldor, to the first destination in the continental United States on shipments of 1500 pounds or more. Exceptions may apply on shipments of certain stock products. Contact your Baldor District Office for these exceptions.

### WARRANTY FOR BALDOR GRINDER / BUFFER PRODUCTS

Baldor Grinder/Buffer products, including dust control units, are warranted for 3 full years against burnouts, defective material and workmanship. Warranty covers all parts except those subject to normal wear such as wheels. The serial number indicates the month and year of manufacture — this determines the warranty period.

### TYPICAL NAMEPLATE

<b>BALDOR®</b>			
CAT. NO.			
H.P.		VOLTS	
PHASE		AMPS	
HZ.		R.P.M.	
FRAME		SERIAL NO.	
SPEC. NO.			
MANUFACTURED IN U.S.A. BY BALDOR ELECTRIC CO.			

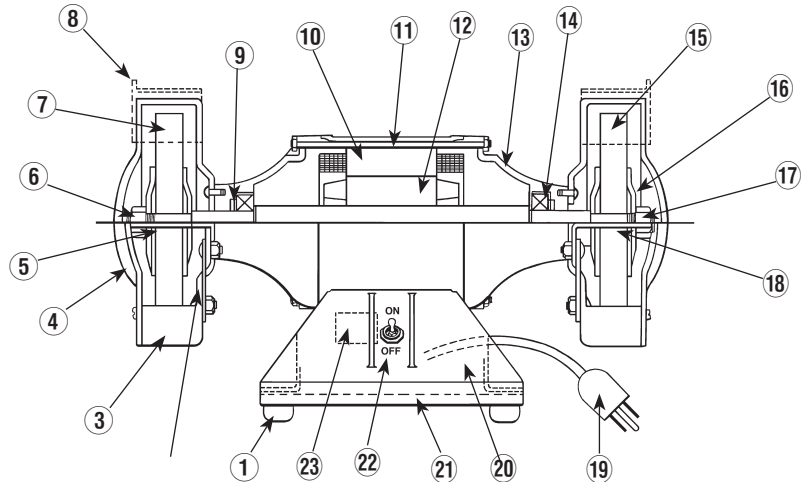
Instruction sheets for Baldor Grinder/Buffer Products are available  
See listing on parts page

### Touch-up Paint – Aerosol can

Gray – #MG1000G23-ASP

Red – #MG1000R01-ASP

# Baldor 6" & 7" Grinders 1/4 Hp & 1/3 Hp Buffers



Item #	Part Description	Part Number 6"	Part Number 7"
1	Rubber Feet	RM1005A01SP	RM1005A01SP
*	2 Tool Rest Support, Pressed Steel	HA6048A01SP	HA6048A01SP
*	2A Tool Rest Support, Cast Iron	HA6064A01SP	HA6064A01SP
*	3 Guard, Non-Exhaust Type (Right Hand or Left Hand)	G6FH3800SP	G7FH3800SP
*	3A Guard, Exhaust Type (Right Hand) Cast Iron	G6FH1802A01	G7FH1802A01SP
*	3B Guard, Exhaust Type (Left Hand) Cast Iron	G6FH1800A01SP	G7FH1800A01SP
*	4 Guard Cover, Non-Exhaust Type (Right Hand or Left Hand)	G6FH3801SP	G7FH3801SP
*	4A Guard Cover, Exhaust Type (Right Hand) Cast Iron	G6FH1803A01SP	G7FH1803A01SP
*	4B Guard Cover, Exhaust Type (Left Hand) Cast Iron	G6FH1801A01SP	G7FH1801A01SP
*	5 Tool Rest, Pressed Steel (Right Hand or Left Hand)	G6AP1009A01SP	G7AP1010A01SP
*	5A Tool Rest, Cast Iron, (Right Hand or Left Hand)	G6AP1008A01SP	G6AP1008A01SP
6	Arbor Nut (Left Hand)	XY5020A62SP (1/2-20)	XY6311A62SP (5/8-11)
*	7 Grinding Wheel	B66	B73
*	8 Spark Arrestor, Solid Type (use with non-exhaust wheel guards)	G6AP1003A01SP	G6AP1003A01SP
*	8A Spark Arrestor, Slotted Type (use with exhaust wheel guards)	G6AP1002A01SP	G6AP1002A01SP
9	Felt Washer	HA1025A01SP	HA1025A02
10	Wound Stator Assembly	Specify Spec. No.	Specify Spec. No.
11	Thru Bolt	HA3100A07	HA3100A11
12	Rotor, with Shaft & Bearings	Specify Spec. No.	Specify Spec. No.
13	Endplate (Right Hand or Left Hand)	G6EP3900A01	G7EP3900A01
14	Bearing	BG6203E03SP	BG6203C03
*	15 Grinding Wheel	B67	B74
16	Wheel Flange, Inside or Outside, Pressed Steel	HA6113SP	HA6115A01SP
16A	Wheel Flange, Inside or Outside, Cast	HA6050A02SP	HA6096A01SP
17	Arbor Nut (Right Hand)	XY5020A12SP (1/2-20)	XY6311A12 SP (5/8-11)
*	18 Tool Rest, Pressed Steel (Right Hand or Left Hand)	G6AP1009A01SP	G7AP1010A01SP
*	18A Tool Rest, Cast Iron (Right Hand or Left Hand)	G6AP1008A01SP	G6AP1008A01SP
19	Cord and Plug	LD5001A07	LD5001A07
20	Base	G6BA3000SP	G7BA3000
21	Base Cover	G6CB4500A01	G7CB4500
22	Switch On - Off (Single Phase)	SP9017SP	SP9000 SP
22A	Switch On - Off (Three Phase)	None	SP9004
23	Relay	RE1020SP	None
N/S	Capacitor	Specify Spec. No.	Specify Spec. No.
**	N/S Vinyl Cap	RM1010A04	None
N/S	Spacers for Wire Brush Wheels	(3 Req'd) HW1000A50	(2 Req'd.) HA2047A01
N/S	Spacer, Flange (for non-exhaust type)	None	HA2072
N/S	Spacer, Flange (for exhaust type)	None	HA2040A01SP

## NOTES:

\*Grinders only.

\*\*Buffers only.

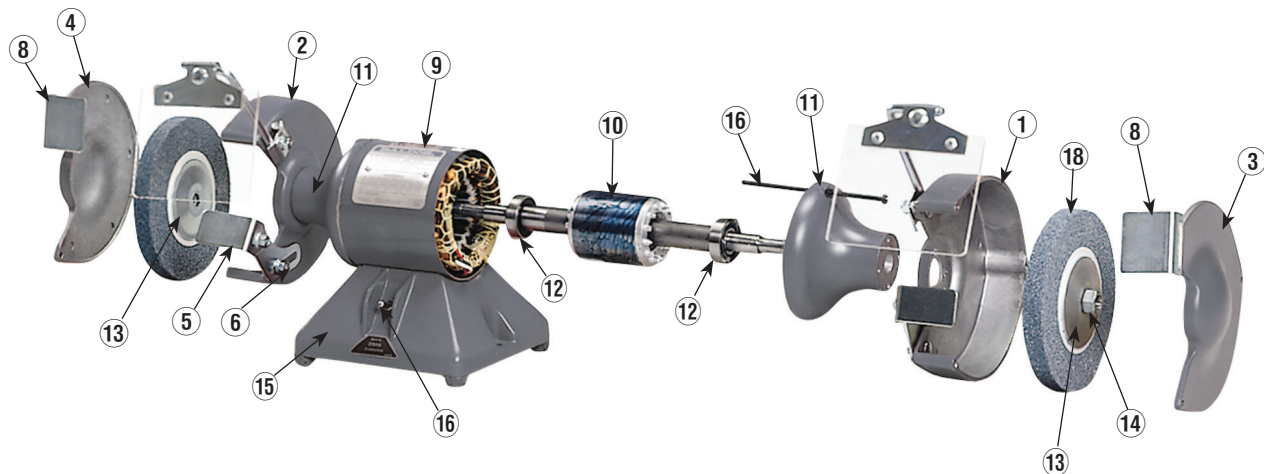
N/S – Not shown on diagram.

Instruction Sheet for 6" thru 14" Grinders — MN903 – is available at no charge.

Instruction Sheet for Buffers — MN906 – is available at no charge.

Instruction Sheet for Grinder-Buffers — MN907 – is available at no charge.

# Baldor 8" thru 14" Grinders 3/4 Hp thru 10 Hp Buffers



Item #	Part Description	Part Number 8"	Part Number 10"	Part Number 12"	Part Number 14"
*1	Guard (Right Hand)	G8FH1800A01SP	G0FH1806A01	G2FH1804A01	G4FH1800A01
*2	Guard (Left Hand)	G8FH1802A01SP	G0FH1807A01SP	G2FH1805A01	G4FH1801A01
*3	Guard Cover (Right Hand)	G8FH1801A01SP	G0FH1805A01SP	G2FH1806A01	G4FH1802A01
*4	Guard Cover (Left Hand)	G8FH1803A01SP	G0FH1804A01	G2FH1807A01	G4FH1803A01
*5	Tool Rest (Right Hand or Left Hand)	G8AP1003A01SP	G8AP1003A01SP	G2AP1002A01SP	G2AP1002A01SP
*6	Tool Rest Support (Right Hand or Left Hand)	HA6099A01SP	HA6101A01SP	HA6049A01SP	HA6049A01SP
7	Arbor Nut (Left Hand)	XY7510A62SP	XY8809A62SP	XZ2007A62SP	XZ2007A62SP
*8	Spark Arrestor	G6AP1002A01SP	G0AP1002SP	G2AP1001	G2AP1001
9	Wound Stator Assembly	Specify Spec. No.	Specify Spec. No.	Specify Spec. No.	Specify Spec. No.
10	Rotor with Shaft & Bearings, (Less Nuts & Flanges)	Specify Spec. No.	Specify Spec. No.	Specify Spec. No.	Specify Spec. No.
11	Endplate (Right Hand or Left Hand)	G8EP3900A01SP	G8EP3900A01SP	G2EP1900A01	G4EP1900A01
12	Bearing	BG6206E03	BG6206E03	BG6208E03	BG6309E03
13	Wheel Flange, Inside or Outside	HA6098	HA6100SP	HA6051SP	HA6051SP
14	Arbor Nut (Right Hand)	XY7510A12SP	XY8809A12SP	XZ2007A12SP	XZ2007A12
15	Base	G8BA3000A01	G8BA3000A01	G2BA1000A01	G4BA1000A01
16	Switch On - Off (Single Phase)	SP9000SP	SP9000SP	None	None
16A	Switch On - Off (Three Phase)	SP9004	SP9004	None	None
N/S	Base Cover	G8CB4500A02	G8CB4500A02	G2CB4500	None
N/S	Cord & Plug (Single Phase)	LD5001A02	None	None	None
N/S	Capacitor, Electrolytic (Single Phase)	None	None	ECI645A06SP	None
N/S	Starter Bracket	None	None	Specify Spec. No.	Specify Spec. No.
N/S	Starting Relay (Single Phase)	None	None	RE5019	None
N/S	Capacitor (Oil Type) (Single Phase)	Specify Spec. No.	Specify Spec. No.	None	None
17	Thru Bolts	HA3100A14	HA3100A14	HA3104A13	HA3104A14
N/S	Rubber Feet	RM1005A01SP	RM1005A01SP	None	None
**N/S	Bearing Retainer	RB3010	RB3010	RB1029A01	RB1028A01
**N/S	Vinyl Cap to Cover Arbor Nut	RM1010A06	RM1010A05SP	RM1010A07	RM1010A07
**N/S	Spacer	HA2048A01SP	HA2050A01	None	None
*18	Grinding Wheel				

**NOTES:** Instruction Sheet for 6" thru 14" grinders — MN903 — is available at no charge.

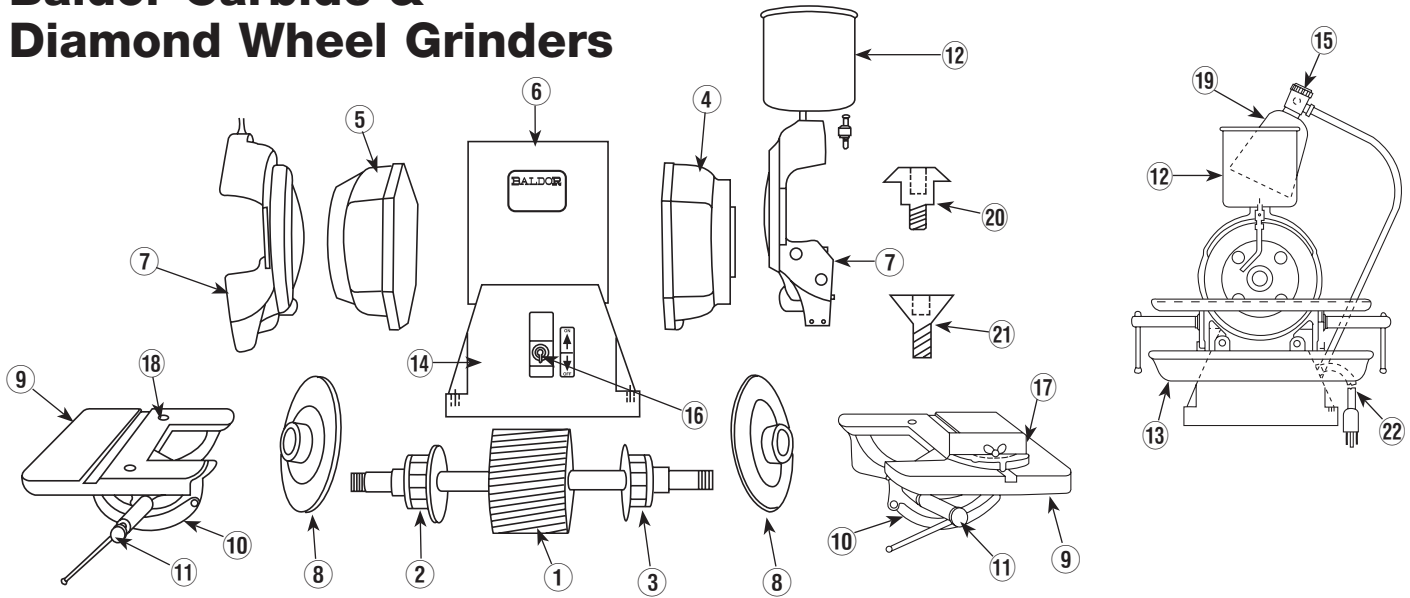
Instruction Sheet for Buffers — MN906 — is available at no charge.

Instruction Sheet for Grinder-Buffers — MN907 — is available at no charge.

N/S = Not shown on diagram.

\* Grinders only. \*\* Buffers only.

# Baldor Carbide & Diamond Wheel Grinders



Item #	Part Description	Part Number	Shipping Weight
1	Rotor, with Shaft and Bearings	Specify Spec. No.	18.0
(A) 2	Ball Bearing	BG6204E03	1.5
(B) 3	Ball Bearing	BG5204C03	1.5
4	Endplate (Right Hand for Carbide Grinders)	G9EP1900A03	5.0
4A	Endplate (Right Hand for Diamond Wheel Grinders)	G9EP1900A10	5.0
5	Endplate, Left Hand	G9EP1900A02	5.0
6	Wound Stator Assembly	Specify Spec. No.	21.0
7	Guard, Wheel (Right Hand or Left Hand)	G9FH1800A01	9.0
8	Flange, Wheel (Right Hand or Left Hand)	HA6104A01SP	1.0
9	Tool Table, less Rocker (Right Hand or Left Hand)	G9AP1000A01	7.5
10	Rocker for Table	G9AP1003A01SP	1.0
11	Clamp with Handle	HA5001A01SP	1.0
12	Water Pot and Water Cock	G9AP5001A01	3.0
13	Water Tray	G9AP1001A01	9.5
14	Base	G8BA3000A02	4.0
15	Machine Tool Light	G9AP1006A01SP	2.5
16	Switch (115 Volt - Single Phase)	SP9019SP	1.0
16A	Switch (Three Phase)	SP9035SP	1.0
17	Tool Rest (Protractor Type)	G9AP5000A01SP	1.0
18	Screws for Tool Table	HA3407A01	1.0
19	Shade Only (For light)	G9AP1006SP	1.0
20	Screw for Mounting Wheel	HA3007A01SP	1.0
21	Screw for Mounting Diamond Wheels	91XN2520A12	1.0
22	Cord and Plug	LD5001A02	1.0
N/S	Arbor Nut (3/4 x 16 Jam Nut)(Right hand or Left hand)	HA3203A12	1.0
N/S	Base Cover	G8CB4500A02	1.0
N/S	Capacitor 12 mfd.	OC3012F12SP	1.0
N/S	Pointer (angle) (Right Hand)	G9AP1005A01	1.0
N/S	Pointer (angle) (Left Hand)	G9AP1005A02	1.0
N/S	Slinger for Shaft	HA1005A03SP	1.0
N/S	Thru Bolts	HA3100A45	1.0
N/S	Vinyl Cap (Arbor Nut Cover)	RM1010A06	1.0
N/S	Instruction Sheet	MN905 - 281H	—

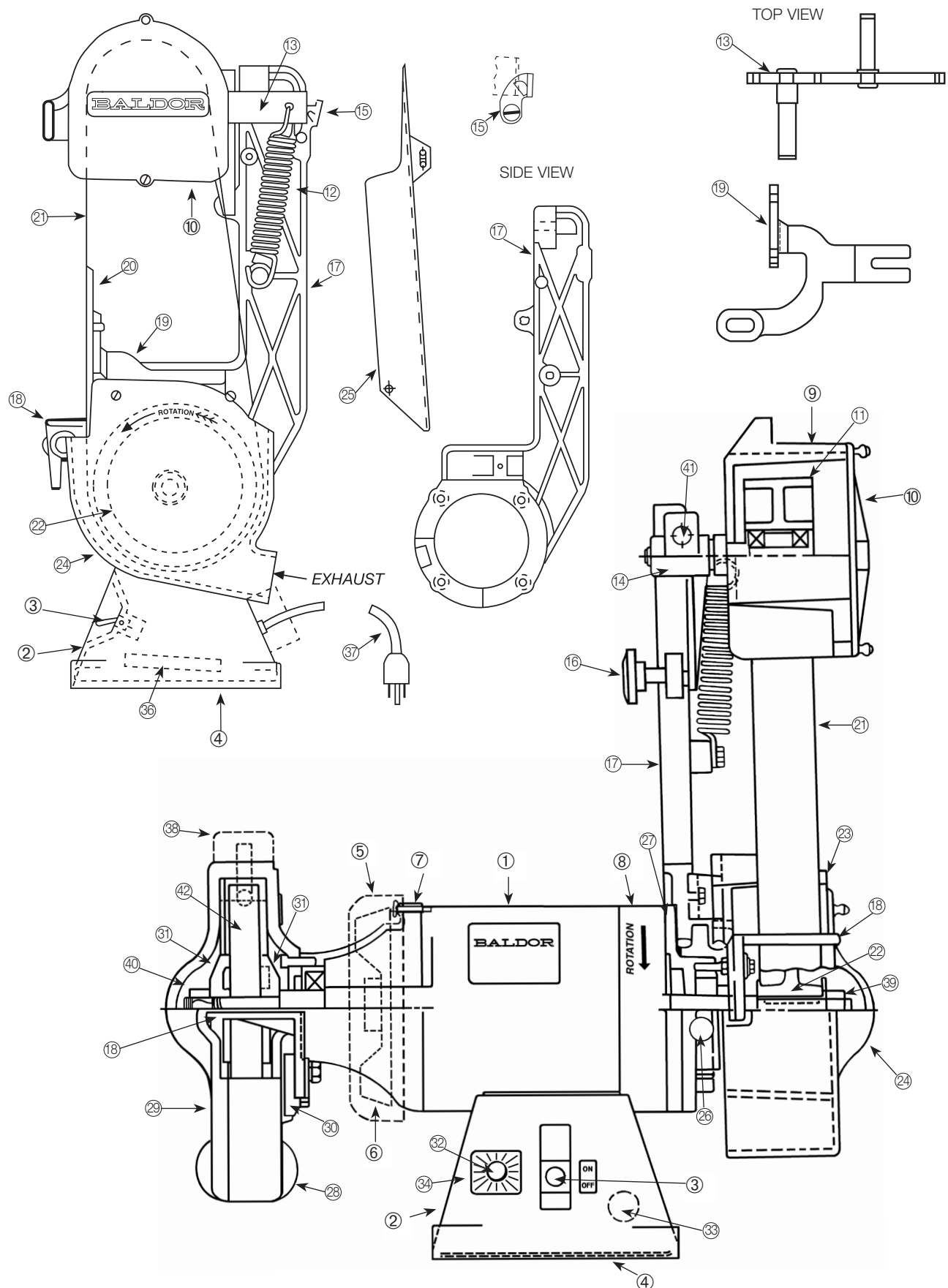
**NOTES:**

N/S = Not shown on diagram

(A) Bearing for left and right side of Carbide Grinders and left side of Diamond Wheel Grinders

(B) Bearing for right side of Diamond Wheel Grinders only.

# Baldor Abrasive Belt Grinders



## Baldor Abrasive Belt Grinders

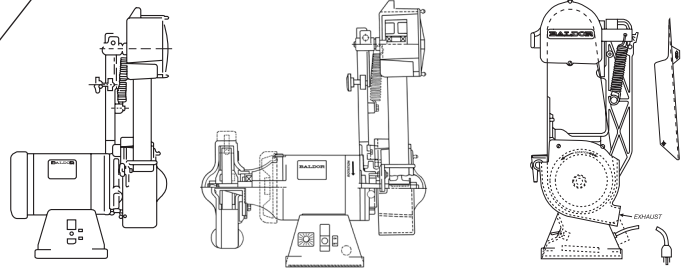
	#2048-151D	SPEC. #B2 - 3A	#2048-153D	SPEC. #B2 - 3C	#248-151TD	SPEC. #B2 - 5A	#248-153TD	SPEC. #B2 - 5C	#248-181TD	SPEC. #B2 - 6D	#248-151AS	SPEC. #B2 - 6C	#248-251AS	SPEC. #B2 - 8A	#248-251AS	SPEC. #B2 - 8B			
Item #																	Part Description	Part Number	Shipping Weight
1	✓																Motor — #2048-151D (Spec. No. B2-3A)	35H713W811	47
1A		✓															Motor — #2048-153D (Spec. No. B2-3C)	35H714-82	39
1B			✓														Motor — #248-151TD (Spec. No. B2-5A)	35G400W811	47
1C				✓													Motor — #248-153TD (Spec. No. B2-5C)	35H410-82	39
1D					✓												Motor — #248-181TD (Spec. No. B2-6D)	G8-0378-0350	56
1E						✓											Motor — #248-183TD (Spec. No. B2-6C)	G8-319-318	52
1F							✓										Motor — #248-151AS (Spec. No. B2-8A)	35P486Z331	54
1G								✓									Motor — #248-251AS (Spec. No. B2-8C)	35P486Z332	44
2					✓	✓											Base	G8BA3000A01	4
2A		✓		✓													Base	G8BA3000A07	4
2B	✓		✓														Base	G8BA3000A10	4
3	✓		✓		✓			✓	✓								On - Off Switch (Single Phase)	SP9002SP	1
3A		✓		✓		✓											On - Off Switch (Three Phase)	SP9004	1
4	✓	✓	✓	✓			✓	✓	✓								Base Cover	G8CB4500A02	1
4A					✓												Base Cover	G8CB4500A05	1
5	✓	✓	✓	✓				✓	✓								Fan Cover	35FH4005A01SP	1.5
6	✓	✓	✓	✓				✓	✓								Fan – External	35FN3002A05SP	1
7	✓	✓	✓	✓													Endplate (Left Hand for Motor)	35EP3100A02SP	1.5
7A					✓	✓											Endplate (Left Hand for Motor)	G8EP3900A01SP	2
7B							✓	✓									Endplate (Left Hand for Motor)	35EP3106A16	1.5
8	✓			✓	✓												Endplate (Right Hand for Motor)	35EP3300A33	2
8A		✓	✓														Endplate (Right Hand for Motor)	35EP3300A44	2
8B						✓											Endplate (Right Hand for Motor)	35EP3300A02SP	2
8C								✓	✓								Endplate (Right Hand for Motor)	35EP1318A04	2
9	✓	✓	✓	✓	✓	✓	✓	✓	✓								Guard for Idler Wheel	B2FH2801A01SP	3.5
10	✓	✓	✓	✓	✓	✓	✓	✓	✓								Guard Cover for Idler Wheel	B2FH2808A01SP	1
11	✓	✓	✓	✓	✓	✓	✓	✓	✓								Idler Wheel with Bearings	B2AP3003A01SP	2.5
12	✓	✓	✓	✓	✓	✓	✓	✓	✓								Tension Spring for Idler Wheel	HA7001A01SP	1
13	✓	✓	✓	✓	✓	✓	✓	✓	✓								Idler Arm – Less Wheel	HA5004A01SP	2
14	✓	✓	✓	✓	✓	✓	✓	✓	✓								Tracking Arm	HA6134A01SP	1.5
15	✓	✓	✓	✓	✓	✓	✓	✓	✓								Latch Stop – for Idler Arm	B2AP1000A01	1
16	✓	✓	✓	✓	✓	✓	✓	✓	✓								Adjusting Knob – for Tracking	HA5000A01	1

### NOTES:

\* Belt Guard Kit — to replace plastic guard on #2048-151D and 153D manufactured before 1985.

N/S = Not shown on diagram.

Instruction Sheet for Belt Grinders MN902 — is available at no charge.



## Baldor Abrasive Belt Grinders

#2048-151D SPEC. #B2 - 3A

#2048-153D SPEC. #B2 - 3C

#248-151TD SPEC. #B2 - 5A

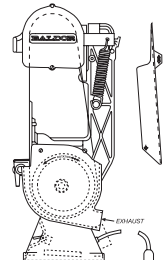
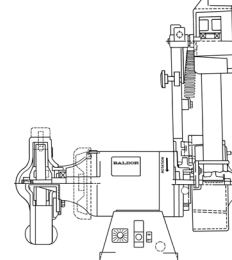
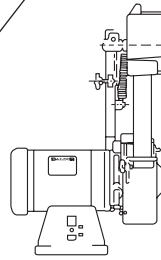
#248-153TD SPEC. #B2 - 5C

#248-181TD SPEC. #B2 - 6D

#248-183TD SPEC. #B2 - 6C

#248-151AS SPEC. #B2 - 8A

#248-251AS SPEC. #B2 - 8B



Item #									Part Description	Part Number	Shipping Weight
17			✓	✓	✓	✓	✓	✓	Bracket – Idler Pivot Arm	HA6218A01	5
17A	✓	✓							Bracket – Idler Stationary Arm	HA6218A02	5
18	✓	✓	✓	✓	✓	✓	✓	✓	Tool Rest	G8AP1003A01SP	1.5
19	✓	✓	✓	✓	✓	✓	✓	✓	Support for Tool Rest and Platen	HA6068A02	2
20	✓	✓	✓	✓	✓	✓	✓	✓	Platen only	B2AP1005A02	1.5
21	✓	✓	✓	✓	✓	✓	✓	✓	Abrasive Belt 2" x 48" – 80 Grit	AB248	1
22	✓	✓	✓	✓	✓	✓	✓	✓	Contact Wheel – 7" x 2"	B2AP5001A01SP	2.5
23	✓	✓	✓	✓	✓	✓	✓	✓	Guard – for Contact Wheel	B2FH2806A01SP	1
24	✓	✓	✓	✓	✓	✓	✓	✓	Guard Cover (Inside) for Contact Wheel	B2FH2811A01SP	3
24A	✓	✓	✓	✓	✓	✓	✓	✓	Guard Cover (Outside) for Contact Wheel	B2FH2810A01SP	3
25	✓	✓	✓	✓	✓	✓	✓	✓	Belt Guard – Rear Portion	B2FH2809A01SP	2
26			✓	✓	✓	✓	✓	✓	Pull Knob – for Pivot Arm	HW2404A01	1.5
27			✓	✓	✓	✓	✓	✓	Adapter for Pivot Arm	HA6219A01	5
28					✓	✓			Wheel Guard (Left Hand)	G8FH1802A01SP	10
29					✓	✓			Guard Cover (Left Hand)	G8FH1803A01SP	7
30					✓	✓			Tool Rest Support	HA6099A01SP	1
31					✓	✓			Wheel Flange (Inside and Outside)	HA6098	2
32							✓	✓	Speed Control Knob Kit	BC149	1
33							✓		Plug-In Resistor (Speed Control)	WD3007A12	1
33A								✓	Plug-In Resistor (Speed Control)	WD3007A10	1
34							✓	✓	Potentiometer Kit (Speed Control)	BC148	1
36							✓		Electronic Speed Control Board	CN3000A18SP	1
36A								✓	Electronic Speed Control Board	CN3000A01SP	2
37	✓		✓						Cord with Plug (115 Volt)	LD5014	1
38					✓	✓			Spark Arrestor	G6AP1002A01SP	1
39	✓	✓	✓	✓	✓	✓	✓	✓	Arbor Nut (Right Hand)	XY7510A12SP	1
40					✓	✓			Arbor Nut (Left Hand)	XY7510A62SP	1
41	✓	✓	✓	✓	✓	✓	✓	✓	Pivot Shaft – for Tracking Arm	HA3504A01	1
42					✓	✓			Grinding Wheel – 8" x 1" x 3/4" – 36 Grit	B80	5
N/S							✓		Brush (Replacement Carbon Brush)	BP5000T07SP	1
N/S								✓	Brush (Replacement Carbon Brush)	BP5000T15SP	1
N/S									*Belt Guard Kit	A641	18

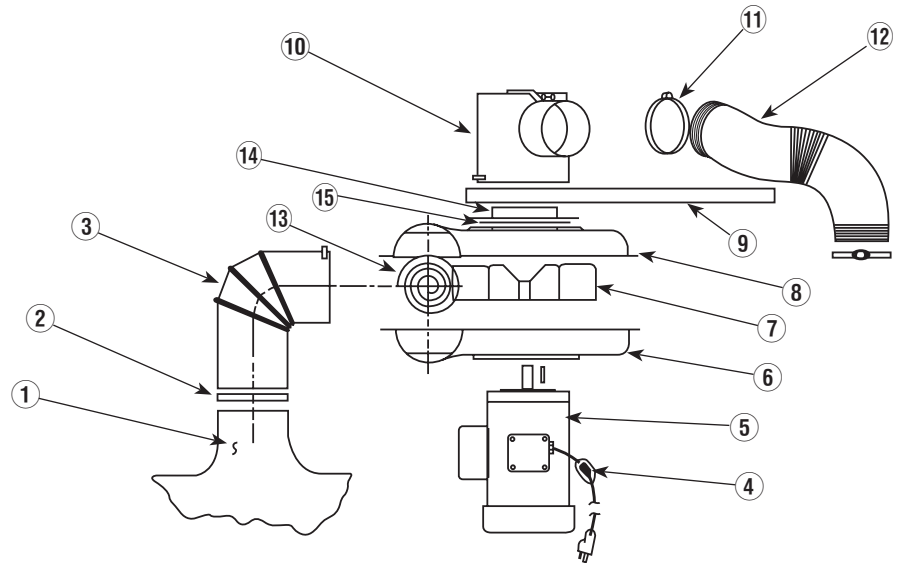
### NOTES:

\* Belt Guard Kit – to replace plastic guard on #2048-151D and 153D manufactured before 1985.

N/S = Not shown on diagram.

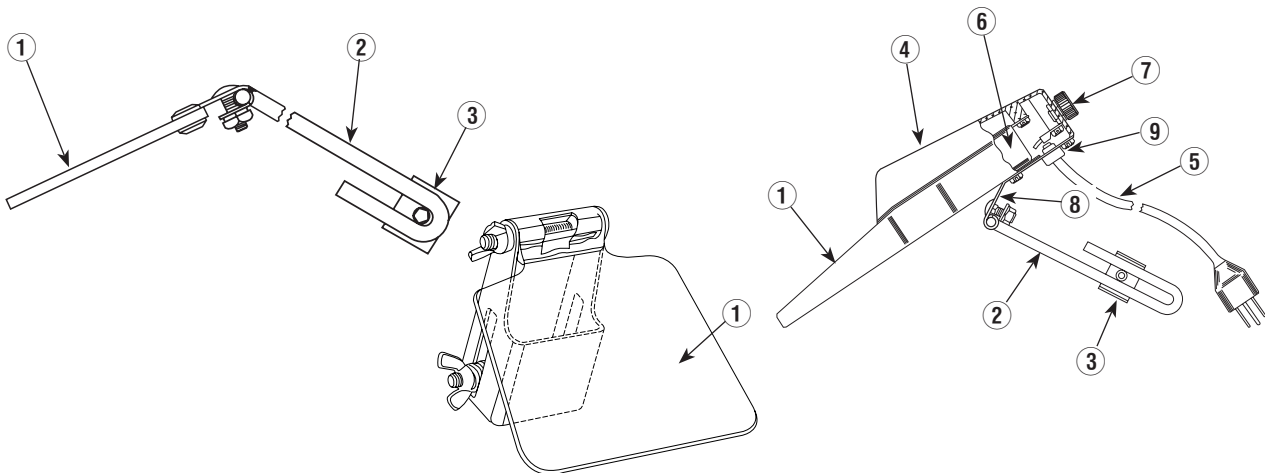
Instruction Sheet for Belt Grinders MN902 – is available at no charge.

## Baldor Dust Control Accessories



Item #	DC7	DC8	DC10	DC12	DC14-3	NOTE: Suffix letter (A -B) is similar to number shown above	
						Part Description	Part Number
1	✓	✓	✓	✓		Dust Bag (Treated with flame retardant)	ARB-1
1A					✓	Dust Bag (Treated with flame retardant)	ARB-2
2	✓	✓	✓	✓		Bag Clamp and Hose Clamp 4" Diameter	31379CF
2A					✓	Bag Clamp and Hose Clamp 6" Diameter	31244CF
3	✓	✓	✓	✓		Bag Elbow 4" Diameter	51269
3A					✓	Bag Elbow 6" Diameter	51111
4	✓	✓	✓	✓		Power Cord w/Switch (115 volts only)	LD5022A01
5	✓	✓	✓	✓		3-Phase 1/2HP Motor	VM3537
5A	✓	✓	✓	✓		1-Phase 1/2HP Motor	VL3503
5B					✓	3-Phase 1HP Motor	VM3545
6	✓	✓	✓	✓		Motor Side Blower Housing SPB-9	34025
6A					✓	Motor Side Blower Housing SPB-12	34029
7	✓	✓	✓	✓		Blower Wheel, 10-5/8" x 2-5/8", 5/8" Bore	5530602
7A					✓	Blower Wheel, 11" x 3" BC, 5/8" Bore	55098-02
8	✓	✓	✓	✓		Blower Housing, Inlet Side	34026
8A					✓	Blower Housing, Inlet Side	34030
9	✓	✓	✓	✓		Mounting Plate	03253
9A					✓	Mounting Plate	03255
10	✓	✓				Inlet Box with 3" Ports	51229
10A			✓			Inlet Box with 4" Ports	51230
10B				✓		Inlet Box with 5" Ports	51231
10C					✓	Inlet Box with 5" Ports	51081
11	✓	✓				Hose Clamp, 3" Diameter	31013
11A			✓			Hose Clamp, 4" Diameter	-
11B				✓	✓	Hose Clamp, 5" Diameter	31016
12	✓	✓				Hose, 3" Diameter, 14" Long	31100
12A			✓			Hose, 4" Diameter, 14" Long	31101
12B				✓	✓	Hose, 5" Diameter, 18" Long	31496
13	✓	✓	✓	✓		Discharge Guard	29330
13A					✓	Discharge Guard	-
14	✓	✓	✓	✓		Inlet Collar	-
14A					✓	Inlet Collar	-
15	✓	✓	✓	✓		Inlet Guard	-
15A					✓	Inlet Guard	-

## Baldor Eyeshields



Item #	Part Description	GA10 (G6-220)	GA11 (A-516)	<sup>1</sup> GA9 (G7-236) and GA9S (G7-281)
		Part Number	Part Number	Part Number
1	Plexi-glass Pane	<sup>2</sup> G6AP5001A01A	<sup>2</sup> G7AP5003A01SP	G7AP1007A01SP
2	Mounting Arm	HA6093A01 SP	HA6103A01SP	HA6103A01SP
3	Mounting Arm Clamp	HA6094A01 SP	HA6094A01SP	HA6094A01SP
4	Frame	-	-	G7AP1006
5	Cord with Plug	-	-	LD5001A02
6	Lamp Socket	-	-	WD4003A01
7	On - Off Switch (GA9S and GA9SR only)	-	-	SP9026
8	Swivel Bracket (Bulb Socket Retainer Plate)	-	-	HA6102A01SP
9	Cord Strain Relief	-	-	WD4102A01

### NOTES:

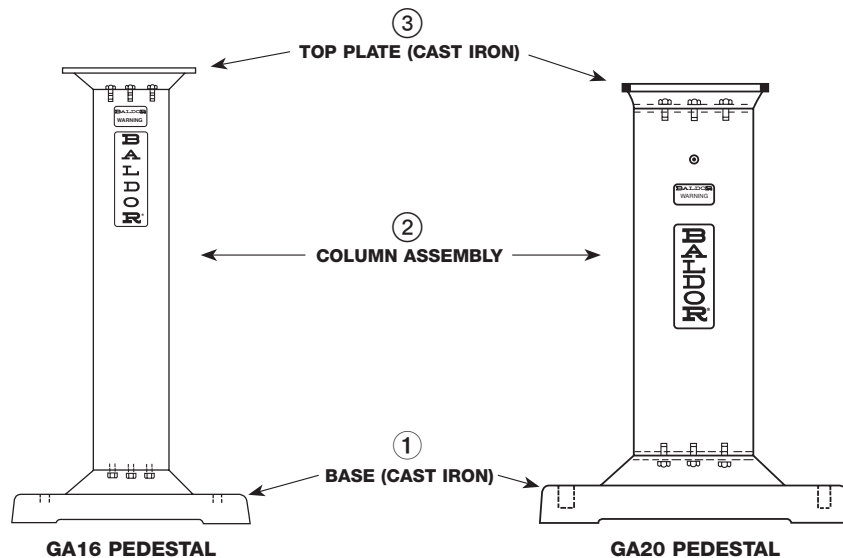
<sup>1</sup> Parts for GA9 and GA9S also apply to GA9R and GA9SR.

No bulbs are supplied. Rough service bulbs are suggested, maximum 60 watts.

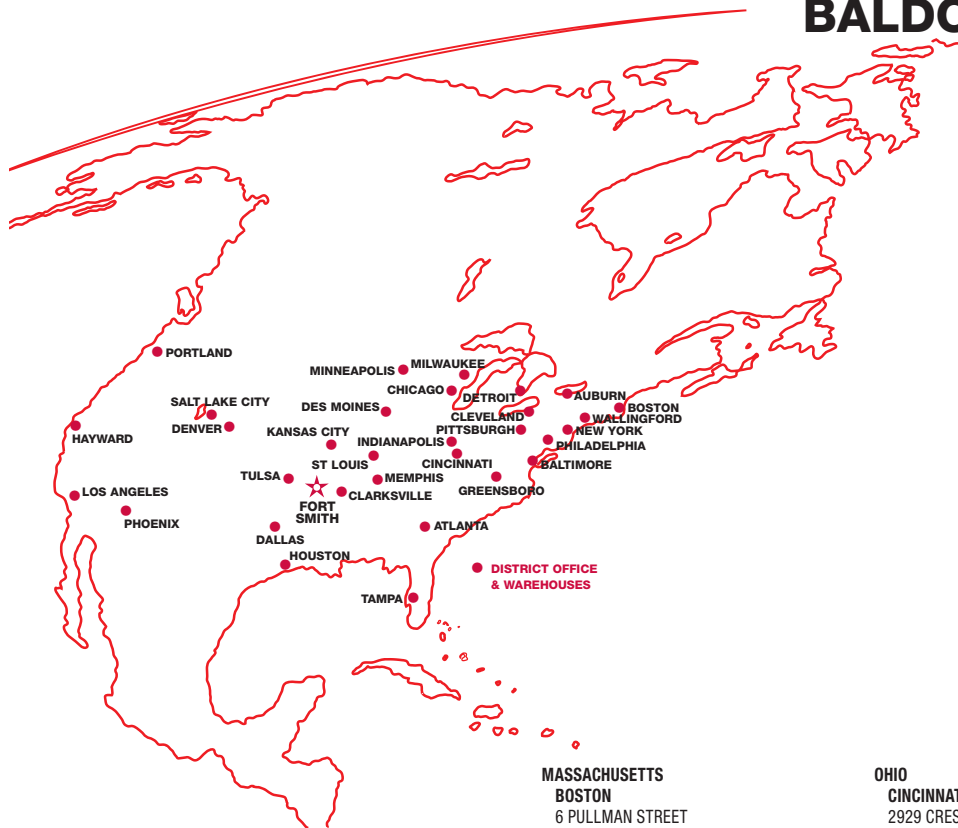
<sup>2</sup> Plexi-glass pane on GA10 and GA11 include mounting bracket.

Instruction sheet MN909 – is available at no charge.

## Baldor Pedestals



Item #	Part Description	GA16	GA20
		Part Number	Part Number
1	Base (Cast Iron)	G6BA1001A01	G8BA1002A01
2	Column Assembly	G8BA5000A03	G8BA5000A01
3	Top Plate (Cast Iron)	HA6069A01	G8BA1001A01

**BALDOR SALES OFFICES****UNITED STATES****ARIZONA  
PHOENIX**

4211 S 43RD PLACE  
PHOENIX, AZ 85040  
PHONE: 602-470-0407  
FAX: 602-470-0464

**ARKANSAS**

**CLARKSVILLE**  
706 WEST MAIN STREET  
CLARKSVILLE, AR 72830  
PHONE: 479-754-9108  
FAX: 479-754-9205

**CALIFORNIA**

**LOS ANGELES**  
6480 FLOTILLA STREET  
COMMERCE, CA 90040  
PHONE: 323-724-6771  
FAX: 323-721-5859

**HAYWARD**

21056 FORBES STREET  
HAYWARD, CA 94545  
PHONE: 510-785-9900  
FAX: 510-785-9910

**COLORADO**

**DENVER**  
3855 FOREST STREET  
DENVER, CO 80207  
PHONE: 303-623-0127  
FAX: 303-595-3772

**CONNECTICUT**

**WALLINGFORD**  
65 SOUTH TURNPIKE ROAD  
WALLINGFORD, CT 06492  
PHONE: 203-269-1354  
FAX: 203-269-5485

**FLORIDA**

**TAMPA/PUERTO RICO/  
VIRGIN ISLANDS**  
3906 EAST 11TH AVENUE  
TAMPA, FL 33605  
PHONE: 813-248-5078  
FAX: 813-241-9514

**GEORGIA**

**ATLANTA**  
62 TECHNOLOGY DRIVE  
ALPHARETTA, GA 30005  
PHONE: 770-772-7000  
FAX: 770-772-7200

**ILLINOIS**

**CHICAGO**  
1055 REMINGTON BLVD.  
BOLINGBROOK, IL 60440  
PHONE: 630-296-1400  
FAX: 630-226-9420

**INDIANA**

**INDIANAPOLIS**  
5835 DECATUR BLVD, SUITE 100  
INDIANAPOLIS, IN 46241  
PHONE: 317-857-6019  
FAX: 317-830-8131

**IOWA**

**DES MOINES**  
1943 HULL AVENUE  
DES MOINES, IA 50313  
PHONE: 515-263-6929  
FAX: 515-263-6515

**MARYLAND**

**BALTIMORE**  
7071A DORSEY RUN RD  
ELKBRIDGE, MD 21075  
PHONE: 410-579-2135  
FAX: 410-579-2677

**MASSACHUSETTS**

**BOSTON**  
6 PULLMAN STREET  
WORCESTER, MA 01606  
PHONE: 508-854-0708  
FAX: 508-854-0291

**MICHIGAN**

**DETROIT**  
5993 PROGRESS DRIVE  
STERLING HEIGHTS, MI 48312  
PHONE: 586-978-9800  
FAX: 586-978-9969

**MINNESOTA**

**MINNEAPOLIS**  
13098 GEORGE WEBER DR, SUITE 400  
ROGERS, MN 55374  
PHONE: 763-428-3633  
FAX: 763-428-4551

**MISSOURI**

**ST LOUIS**  
13678 LAKEFRONT DRIVE  
EARTH CITY, MO 63045  
PHONE: 314-373-3032  
FAX: 314-373-3038

**KANSAS CITY**

9810 INDUSTRIAL BLVD.  
LENEXA, KS 66215  
PHONE: 816-587-0272  
FAX: 816-587-3735

**NEW YORK**

**AUBURN**  
ONE ELLIS DRIVE  
AUBURN, NY 13021  
PHONE: 315-255-3403  
FAX: 315-253-9923

**NORTH CAROLINA**

**GREENSBORO**  
1220 ROTHERWOOD ROAD  
GREENSBORO, NC 27406  
PHONE: 336-272-6104  
FAX: 336-273-6628

**OHIO**

**CINCINNATI**  
2929 CRESCENTVILLE ROAD  
WEST CHESTER, OH 45069  
PHONE: 513-771-2600  
FAX: 513-772-2219

**CLEVELAND**

8929 FREEWAY DRIVE  
MACEDONIA, OH 44056  
PHONE: 330-468-4777  
FAX: 330-468-4778

**OKLAHOMA**

**TULSA**  
5555 E. 71ST ST., SUITE 9100  
TULSA, OK 74136  
PHONE: 918-366-9320  
FAX: 918-366-9338

**OREGON**

**PORTLAND**  
16201 SE 98TH AVENUE  
CLACKAMAS, OR 97015  
PHONE: 503-691-9010  
FAX: 503-691-9012

**PENNSYLVANIA**

**PHILADELPHIA**  
103 CENTRAL AVENUE  
SUITE 400B  
MOUNT LAUREL, NJ 08054  
PHONE: 856-840-8011  
FAX: 856-840-0811

**PITTSBURGH**

159 PROMINENCE DRIVE  
NEW KENSINGTON, PA 15068  
PHONE: 724-889-0092  
FAX: 724-889-0094

**TENNESSEE**

**MEMPHIS**  
4000 WINCHESTER ROAD  
MEMPHIS, TN 38118  
PHONE: 901-365-2020  
FAX: 901-365-3914

**TEXAS**

**DALLAS**  
2920 114TH STREET SUITE 100  
GRAND PRAIRIE, TX 75050  
PHONE: 214-634-7271  
FAX: 214-634-8874

**HOUSTON**

10355 W. LITTLE YORK ROAD  
SUITE 300  
HOUSTON, TX 77041  
PHONE: 281-977-6500  
FAX: 281-977-6510

**UTAH**

**SALT LAKE CITY**  
2230 SOUTH MAIN STREET  
SALT LAKE CITY, UT 84115  
PHONE: 801-832-0127  
FAX: 801-832-8911

**WISCONSIN**

**MILWAUKEE**  
1960 SOUTH CALHOUN ROAD  
NEW BERLIN, WI 53151  
PHONE: 262-784-5940  
FAX: 262-784-1215

**INTERNATIONAL SALES**

TO BUY PRODUCT OUTSIDE THE UNITED STATES, PLEASE CONTACT ABB AT:  
<http://www.abb.com/contacts>

**BALDOR**

A MEMBER OF THE ABB GROUP

Baldor Electric Company • P.O. Box 2400 • Fort Smith, AR 72902-2400 U.S.A.

Ph: (479) 646-4711 • Fax (479) 648-5792 • International Fax (479) 648-5895 • [www.baldor.com](http://www.baldor.com)